



Northwest Technical College Wireless Instructions

Student Windows XP Service Pack 3

(XP SP2 & before: please run Windows Updates to update to XP SP3 before trying to configure NTC wireless)

Connecting to NTC wireless network requires your Directory username and password, and proper configuration of your computer. Please contact [Shane Jensen](#), Information Systems Specialist, 218.333.6651 to obtain your username and password or receive assistance in setting up wireless for you.

By connecting to NTC wireless you are agreeing to abide by the following policies:

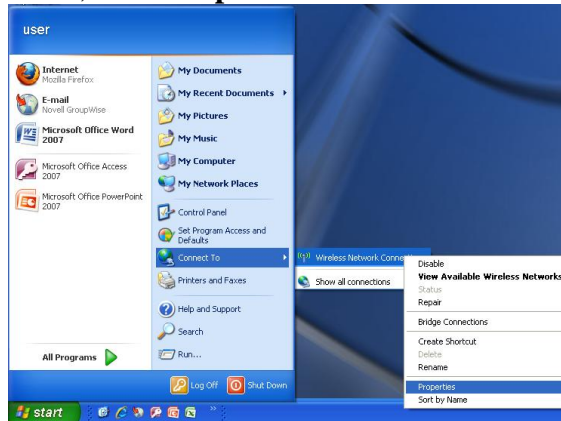
Student Network Use Policy

http://www.ntcmn.edu/about/policies/5000_technology/5200-1-01_Acceptable_Use_of_Computers_and_Info_Technology_Resources.pdf

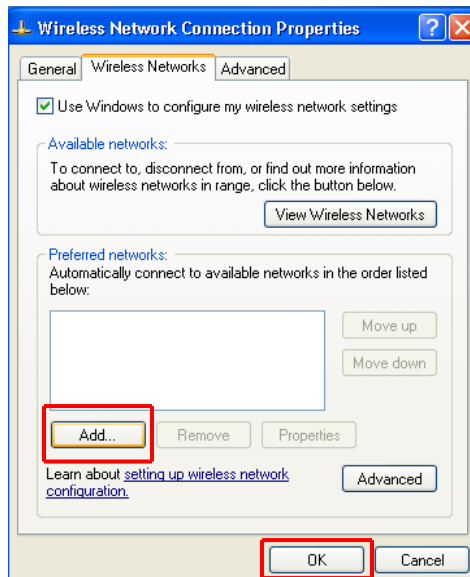
MnSCU Acceptable Use of Computers and Information Technology Resources

<http://www.mnscu.edu/board/policy/522.html>

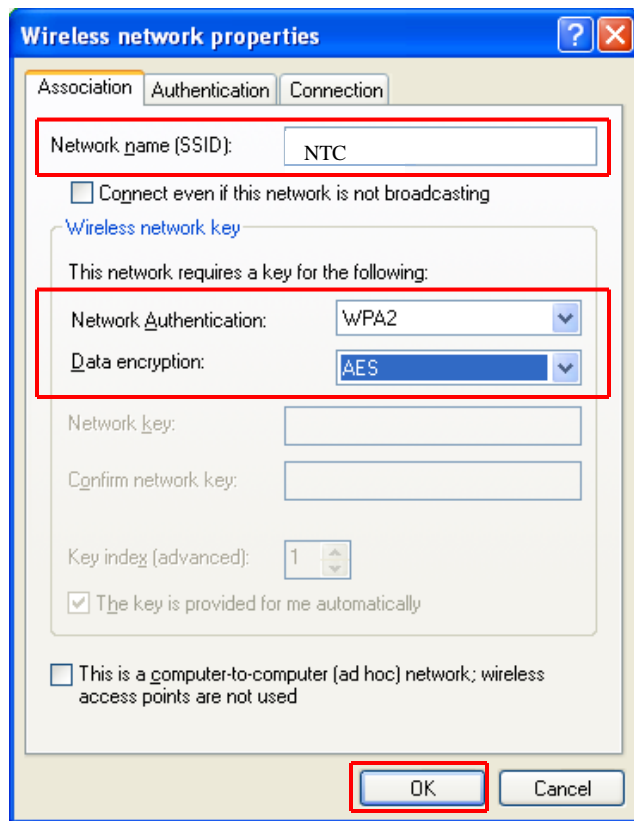
1. Click on **Start > Connect To** and right click on **Wireless Network Connection**. This will bring up another menu, click **Properties**



2. In the **Wireless Network Connection Properties** dialog box click on the **Wireless Networks** tab. In **Preferred Networks**: Click the **Add...** button



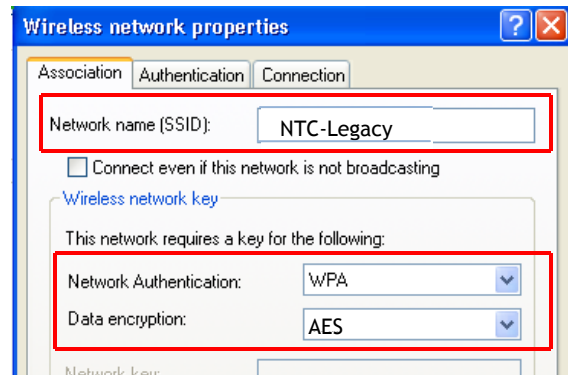
3. On the **Association** tab set the **Network name (SSID)**: as **NTC**



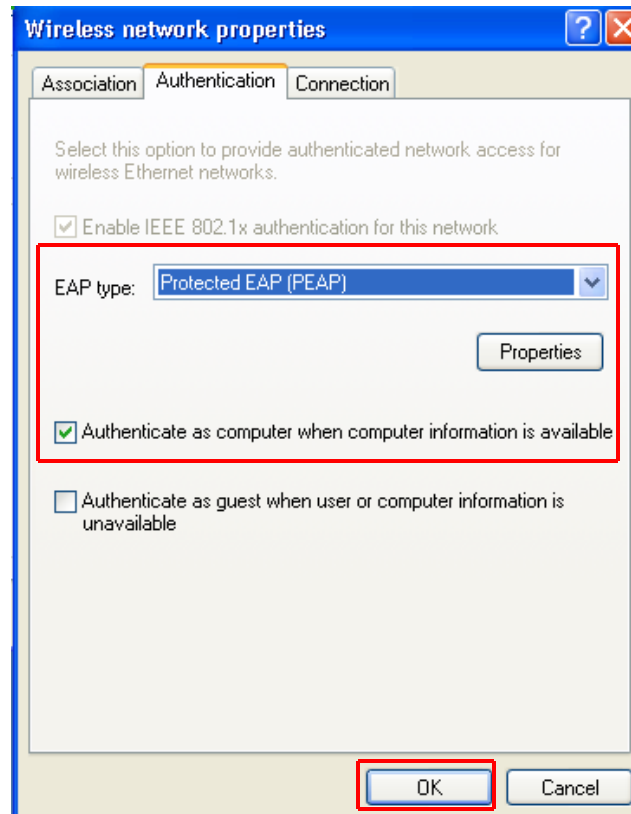
The **Network Authentication**: should be **WPA2**

Data encryption: should be **AES**

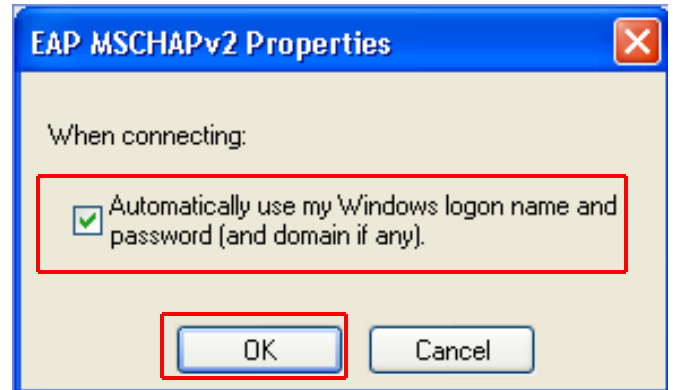
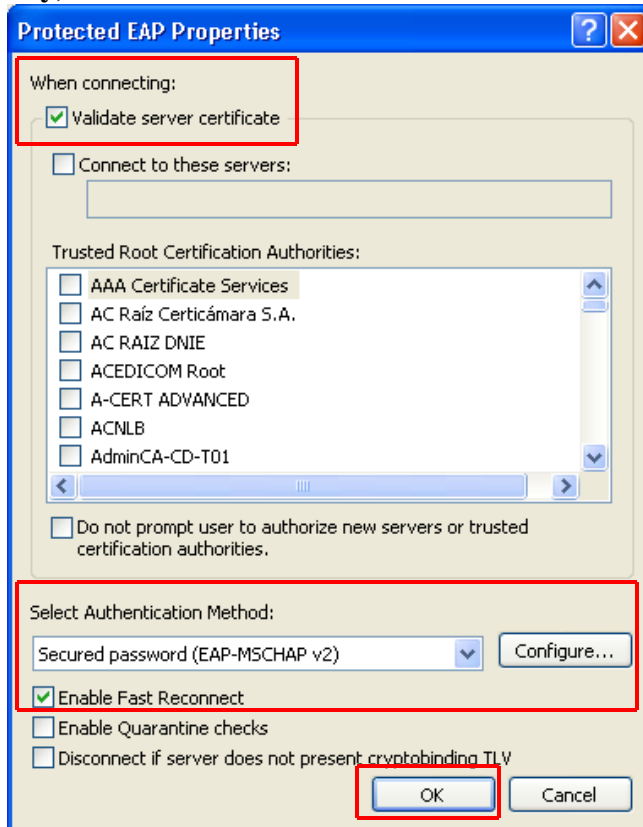
If you do not have **WPA2** as an option under **Network Authentication**: you should choose **WPA** and **Data encryption** as **AES** (if **AES** is not an option choose **TKIP**). You also need to change the **Network name (SSID)**: to **NTC-Legacy** and follow the other instructions in this handout as normal.



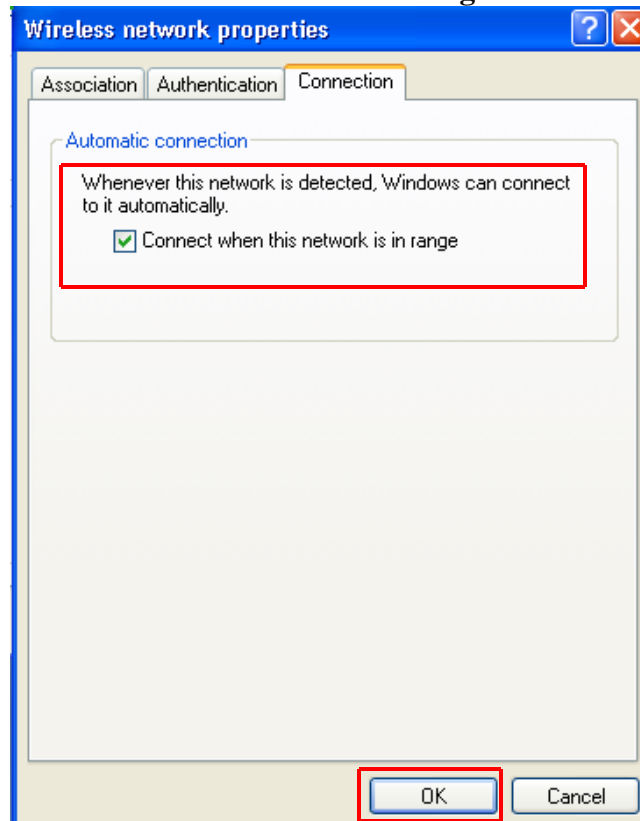
4. On the **Authentication** tab change the **EAP type**: to **Protected EAP (PEAP)** and make sure that **Authenticate as computer when computer information is available** is **UNCHECKED**. Then click on **Properties**



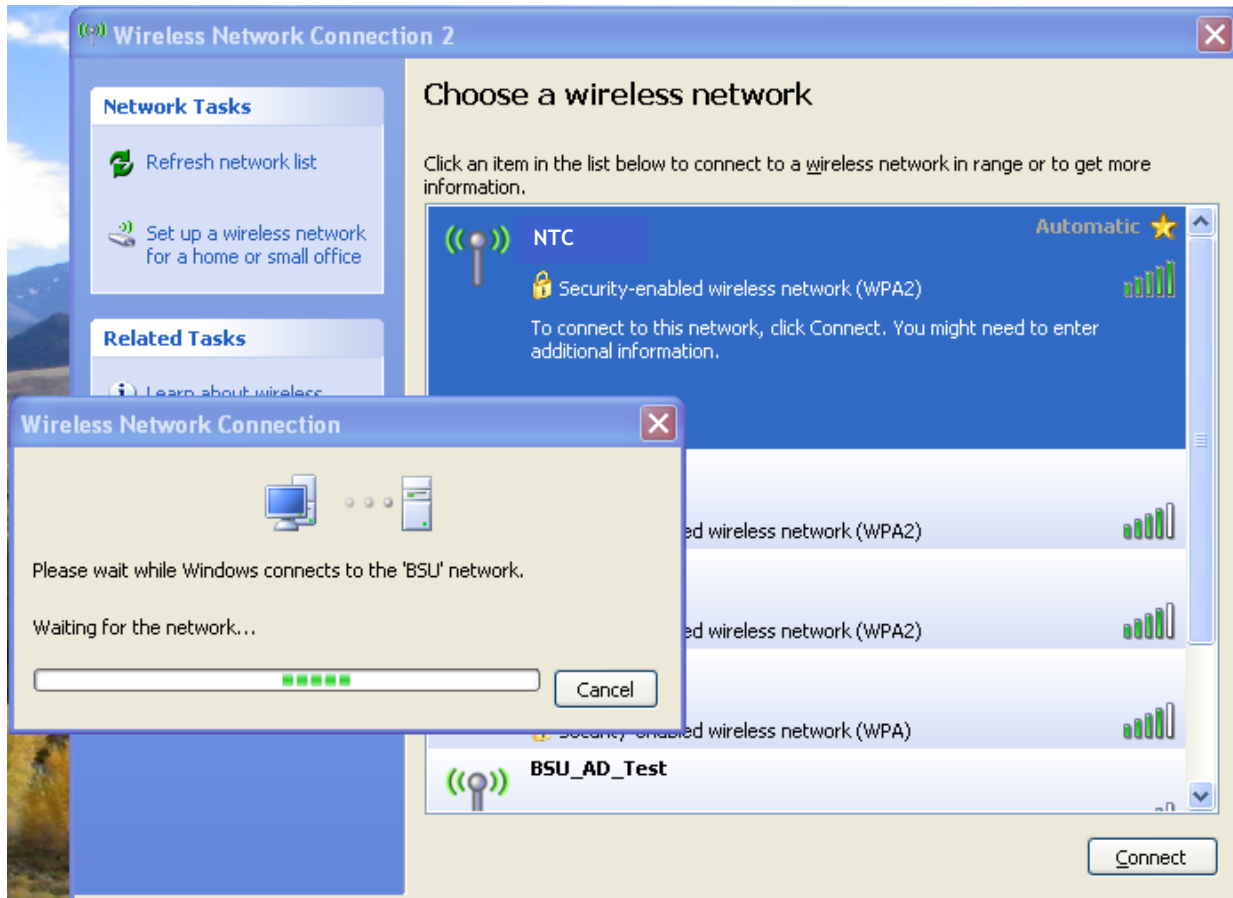
5. In the **Protected EAP Properties** you need to be sure there is a check mark in **Validate server certificate** and **Enable Fast Reconnect**. **Select Authentication Method:** should be set to **Secured password (EAP-MSCHAP v2)**. Click on **Configure** to bring up the **EAP MSCHAPv2 Properties** dialog box and verify that **Automatically use my Windows logon name and password (and domain if any)** is **UNCHECKED**. Then click **OK**.



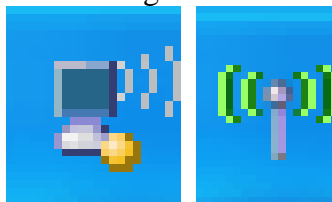
6. On the **Connection** tab **Connect when this network is in range** should be checked. Then click **OK**.



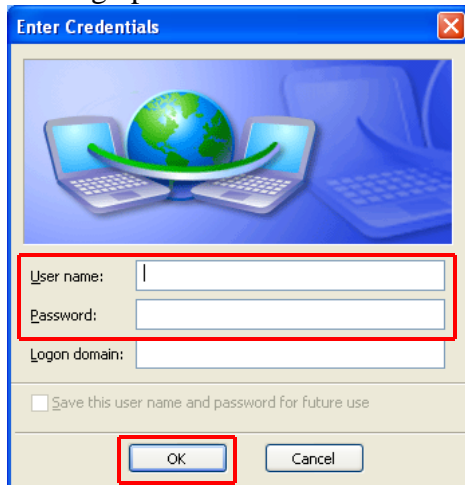
- Double click on the wireless icon in the system tray or click on **Start > Connect To > Wireless Network** to bring up the **Wireless Network Connections** dialog box. In here you should see **NTC** as an available network. Double click on **NTC** to connect.



- You should then see in the lower right side of your computer screen, down in the system tray the wireless icon will switch between the following 2 icons:



The first is showing your computer is trying to connect and when you see the 2nd icon double click on it to bring up the Enter Credentials screen



Enter in your **DIRECTORY** username and password and click **OK**.

Your directory password is the same as the MyNTC or Portal login and for faculty, staff it is the same as the novel login information.

9. Once you enter your login credentials you will see a popup balloon “**Click here to process your login information for the network NTC**”. Click the balloon and then following dialog box will appear. Click **OK** to connect to NTC (or for older hardware NTC-Legacy) and you should not see this box again.



10. You should then be able to see on the Wireless Network Connection box that **NTC** is **Connected**

