



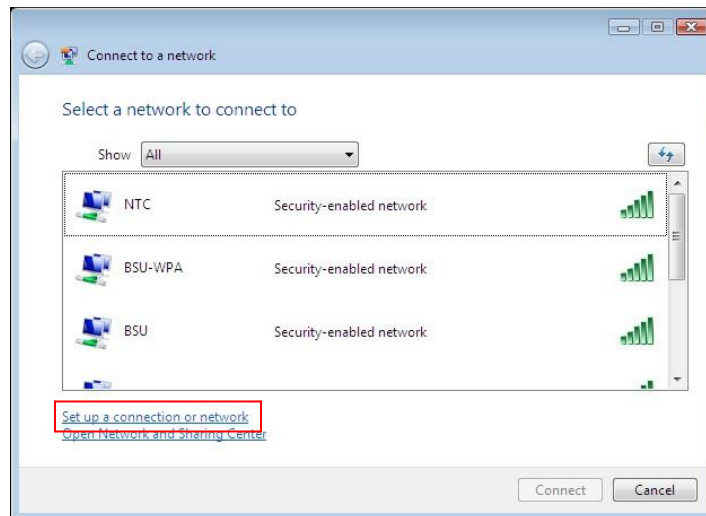
Northwest Technical College Wireless Instructions Faculty/Staff Windows Vista

Connecting to NTC wireless network requires your Directory username and password, and proper configuration of your computer. Please contact [Shane Jensen](#), Information Systems Specialist, 218.333.6651 to obtain your username and password or receive assistance in setting up wireless for you.

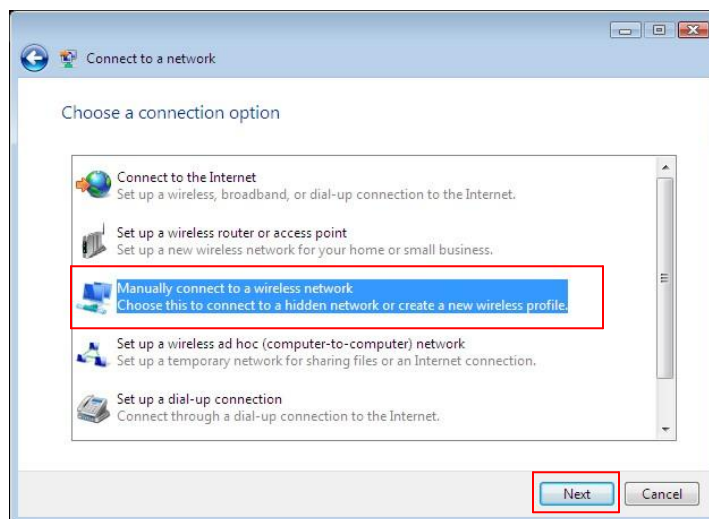
By connecting to NTC wireless you are agreeing to abide by the following policy:

MnSCU Acceptable Use of Computers and Information Technology Resources
<http://www.mnscu.edu/board/policy/522.html>

1. Click on **Start > Connect to** and click on **Set up a connection or network**.



2. Under **Choose a connection option** choose to **Manually connect to a wireless network** and click **Next**.



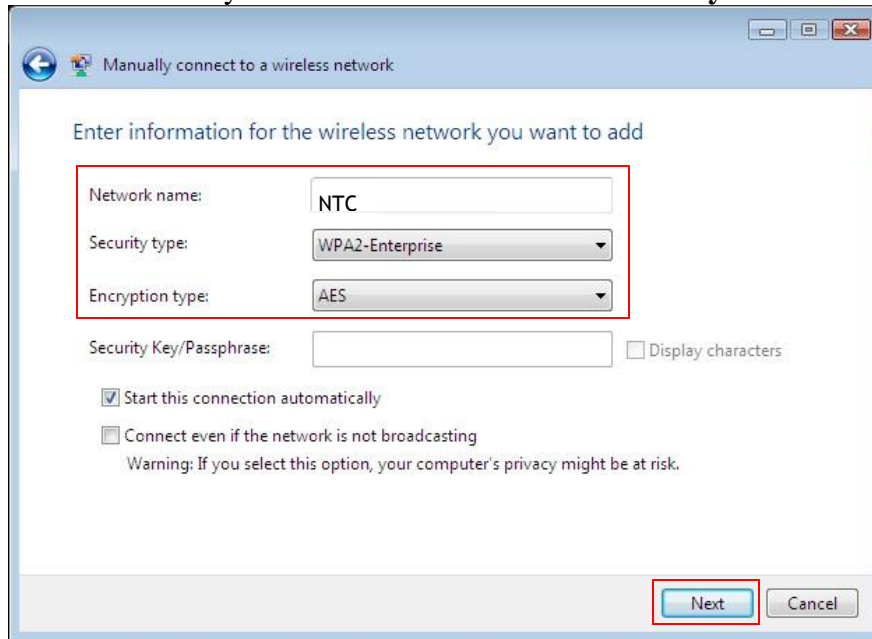
3. On the **Manually connect to a wireless network** dialog box enter the following information.

Network name: NTC

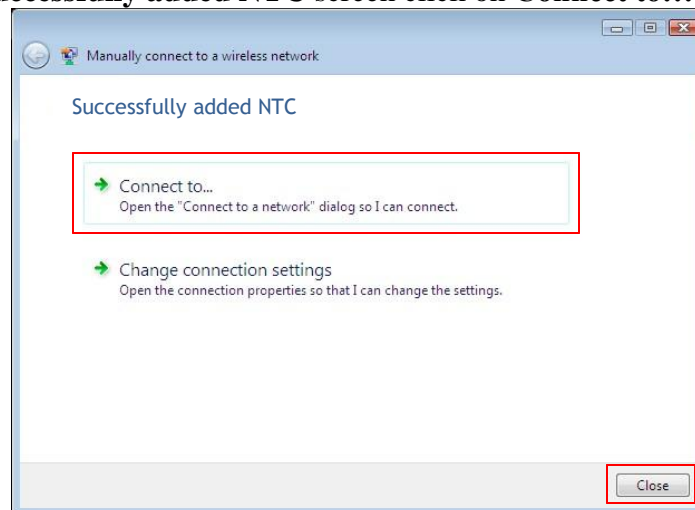
Security type: WPA2-Enterprise

Encryption type: AES

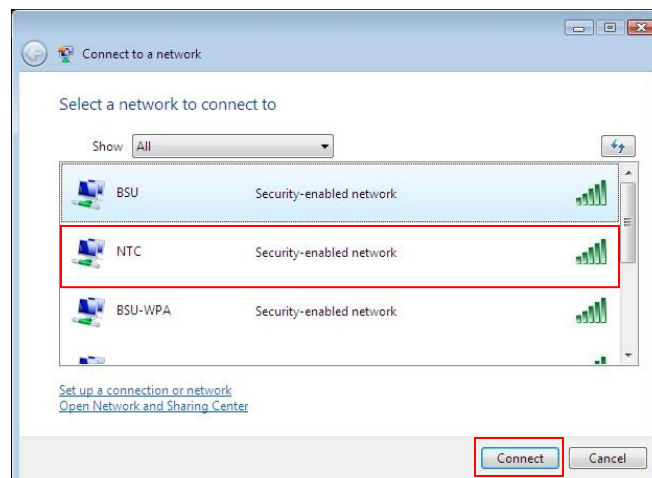
Be sure there is a check mark by **Start this connection automatically** and click **Next**



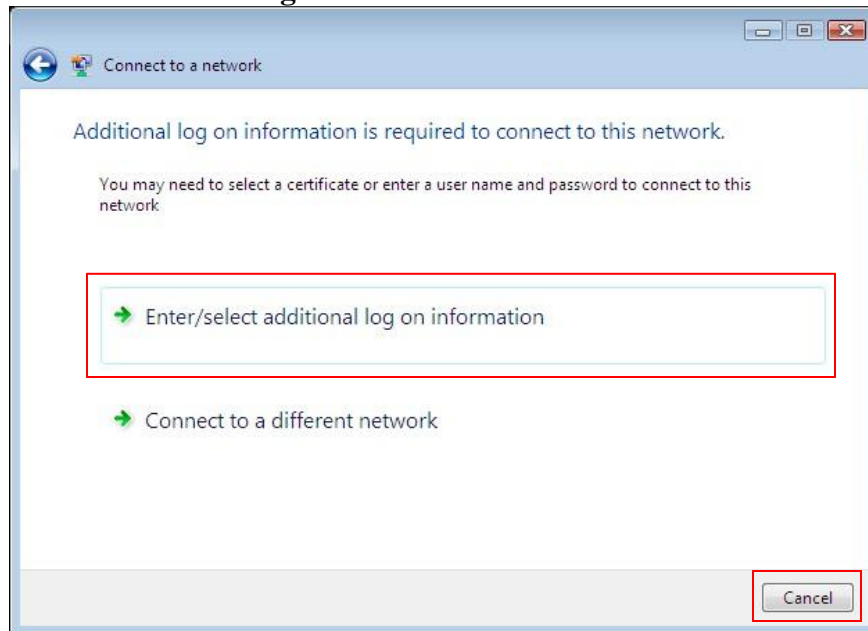
4. When you see the **Successfully added NTC** screen click on **Connect to...**



5. This will then bring you back to the **Connect to a network** dialog box. Click on **NTC** and then click **Connect**



6. The **Additional log on information is required to connect to this network** dialog box will appear. Click on **Enter/select additional log on information**.



7. You will then be prompted to **Enter Credentials**. The username and password required here is your **directory** password (also known as your MyNTC/Portal/Novel login) Leave the **Logon domain:** blank.



8. Click **OK** at **Validate Server Certificate** to complete the installation & connect.

