

Northwest Technical College

Bemidji, MN

Fact Book 2011-12



Compiled: December 2011

Prepared by: Office of Institutional Research & Effectiveness

Doug Olney, Director
Koji Fujiwara, Research Analyst

Deputy #331, Box #24
1500 Birchmont Drive NE
Bemidji, MN 56601
218-755-2764

Northwest Technical College

Fact Book 2011-12

Preface

The Northwest Technical College (NTC) Fact Book provides general statistical and descriptive information about the college which may be useful to those engaged in planning, assessment, preparing reports, writing grant proposals or other endeavors within the college. The Fact Book is a reference tool that provides a picture of NTC for fiscal year 2012 by using Fall 2011 (30th day) data, along with historical trend data. While not all available data has been gathered, the data accurately represents the major areas of the college.

Data may differ from other college and state reports. Such variances result from source of information used, the date on which the report was generated or the reporting period included in the data. Trends should be tracked using identical data sources over time.

NTC's History

The Mississippi River, one of the greatest waterways in the world and a resource critical in the development of our nation, flows powerfully and proudly from northern Minnesota to the Gulf of Mexico. Along the way, it provides a fountainhead of life to communities, industries and economies that rely on it for recreation, commerce and natural aesthetics.

Just as the Mississippi River connected many aspects of early U.S. culture and economy, so too, did the headwaters of this mighty river spawn an educational institution that is now a source of knowledge for a diverse population, molding and shaping the lives and futures of thousands of individuals.

Northwest Technical College history dates back to the early 1960s, when Bemidji High School teacher Jake Outwin recognized that the region needed a workforce with practical skills and knowledge necessary for professional opportunities. With the support of the community and the state of Minnesota, he led an effort to establish the Bemidji Area Vocational Technical Institute, a two-year college that began with two programs, Carpentry and Automotive Mechanics.

That was 1965. Over the years, the college evolved several new names as well as new programs in medical, business, child development and other technological fields that met the increasing needs of its learners, the state and the nation. To lead those programs, creative and resourceful professionals brought incredible talent to the college and tirelessly worked to fulfill a fledgling mission.

The profile of NTC learners changed with time. To predominately young, local male high school graduates, with the pioneer work ethic of their Scandinavian descendents, were added more young women, persons of many ages, and a national and international clientele with ranging ethnicity. They were changing careers or re-educating

themselves with the same hope of creating a quality life that motivated the early indigenous peoples and settlers of the region to success.

Changes in the college physical plant and new technology advanced learning and teaching success. These examples earmark how NTC would embrace change and remained flexible and versatile in a dynamic society and business climate. NTC continues to demonstrate its commitment to developing imaginative leaders who effectively address the challenges of life in a technological society, a pluralistic nation and a multicultural world.

Gone are the days of vocational training, when the college focus was strictly teaching technical skills. Technology drives NTC program development and underpins all instruction, including outreach capabilities that allow learners access to Internet resources and electronic course delivery options. Thus, NTC evolved from a two-year voc tech school to a 21st century learning environment, where learners of all ages and backgrounds are provided with a professional and technological knowledge base that sets them apart from other academic experiences.

The technological learning that takes place on campus is only part of what makes the college special. NTC has embraced the American Indian spirit and legacy by demonstrating respect for tradition and the natural world. Nowhere has a public college added a unique dimension to its programs that is specific to American Indians and important to future U.S. culture and commerce. This includes a satellite campus that is part of the Red Lake Indian Nation community.

The natural beauty of area north woods and lakes also brings learners to NTC. Recreational adventures in fishing, hunting, boating, wildlife viewing, camping, mountain biking, canoeing/kayaking, skiing, and other environmental resources make the region a center of outdoor tourism.

Innovation continues today with a nationally acclaimed partnership. Bemidji State University extends unique four-year university resources to the NTC community. BSU activities and services such as resident hall living, meal plans, health services, library resources, extracurricular activities, recreational facilities and study abroad opportunities are open to NTC learners, marking the only such partnership between a two-year and four-year higher education institution in the state.

NTC learners with entrepreneurial proclivity access regional resources to start and grow small business. NTC and other experts in a range of business-related areas extend their knowledge and expertise nationally through the Small Business Development Center and the Optivation, two programs that help business create and succeed.

In 2010, Dr. Richard Hanson was appointed president of BSU and NTC.

Source: <http://www.ntcmn.edu/about/history/>

Mission & Vision

Mission

Northwest Technical College integrates the value of work with the educational experience to develop resourceful lifelong learners with knowledge, skills, and attitudes to secure rewarding careers and satisfying lives in an increasingly technologically focused, globally interdependent, multicultural society.

Vision

Northwest Technical College is a technological learning organization that is also open and inviting, comprised of professionals that value life-long learning and the worth and dignity of all people. Guided by a commitment to excellence through education with a global focus, Northwest Technical College looks to become the premiere technical college in Minnesota. The academic and co-curricular culture at Northwest Technical College encourages an appreciation of differences and a rich knowledge of self and others that is the foundation of democratic citizenship in a technological world. Such an education is a life-enhancing opportunity that will enable individuals to reach their fullest potential and contribute to the richness of the natural, human, and economic resources of this region.

Source: http://www.ntcmn.edu/about/mission_vision/

Strategic Goals

STRATEGIC GOAL 1: STRENGTH THROUGH GROWTH.

We will achieve growth by strengthening existing and developing new programs.

STRATEGIC GOAL 2: LEARNER FOCUS.

We will increase retention by serving the academic and co-curricular needs of all individuals.

STRATEGIC GOAL 3: FIDUCIARY RESPONSIBILITY.

We will identify fiscal opportunity that enhances our ability to provide quality technological education to our region, state and nation.

STRATEGIC GOAL 4: BUILDING PARTNERSHIPS.

We will effectively align programs and services with Bemidji State University and other partners to leverage effectiveness, efficiency and opportunities for all.

STRATEGIC GOAL 5: CAMPUS ENVIRONMENT.

We will establish a campus environment that encourages excellence, builds community, promotes involvement, supports personal and professional growth, values diversity and engenders pride.

STRATEGIC GOAL 6: QUALITY REPUTATION.

The college will be recognized as the region's premier technological learning center because of its innovative programming, its growth through partnerships and by continuously improving.

Source: *Master Academic and Strategic Plan Strategies for the Future: 2010-2015*

Accreditation

Undergraduate Programs: Higher Learning Commission of the North Central Association of Colleges and Schools (NCA-HLC)

Dental Assisting Program: Commission on Dental Accreditation of ADA (CODA)

Source: <http://www.ntcmn.edu/about/accreditation/>

Revision Record

December 2011: Version 1.0 released

February 2012: Version 1.1 released

- Fixed “Table 29. Ethnicity (IPEDS definition) of New* Students”

List of Figures

Figure 1. Unduplicated Headcount	1
Figure 2. Student Full Year Equivalent	1
Figure 3. Fall Semester Headcount and FTE.....	2
Figure 4. Student Full Year Equivalent by Course Location (percentage bar graph)	2
Figure 5. Duplicated Course Enrollment by Location (percentage bar graph)	3
Figure 6. On-Campus and Online	5
Figure 7. FTE for On-Campus and Online.....	6
Figure 8. Gender by On/Off Campus and Online	7
Figure 9. Minority (IPEDS definition) Student Headcount	8
Figure 10. Projected 30 Year Population for Beltrami County by Age Group	20
Figure 11. K-12 Enrollment for MN Economic Regions 1, 2 and 5 (combined)	20
Figure 12. Beltrami County Average Unemployment Rate	21

List of Tables

Table 1. Fiscal Year Headcount	1
Table 2. Student Full Year Equivalent	1
Table 3. Fall Semester Headcount and FTE *	2
Table 4. Student Full Year Equivalent by Course Location.....	2
Table 5. The Number of Course Sections by Location	2
Table 6. Duplicated Course Enrollment by Location.....	3
Table 7. Gender Ratio	3
Table 8. Full-time/Part-time.....	3
Table 9. Full-time/Part-time by Gender.....	3
Table 10. Full-time/Part-time by Age Groups.....	4
Table 11. Average Age	4
Table 12. Age Groups.....	4
Table 13. Gender by Age Group for Fall 2011	5
Table 14. Traditional Age (24 or less) vs. Non-Traditional Age.....	5
Table 15. On-Campus and Online	5
Table 16. FTE * for On-Campus and Online	6
Table 17. Gender by On/Off Campus and Online	7
Table 18. Traditional Age by On/Off Campus and Online.....	7
Table 19. Ethnicity (IPEDS definition)	8
Table 20. Ethnicity (duplicated)	8
Table 21. New* Students by Admission Status.....	9
Table 22. New* Students by Student Level	9
Table 23. Returned Students by Admission Status.....	9
Table 24. Returned Students by Student Level	9
Table 25. Student Level.....	9
Table 26. New* / Returning Students.....	10
Table 27. New* / Returning Students by Full / Part-time Status for Fall 2011.....	10
Table 28. Admission Status by On/Off Campus	10
Table 29. Ethnicity (IPEDS definition) of New* Students.....	11
Table 30. Ethnicity (duplicated) of New* Students	11
Table 31. In-state vs. Out-of-state	11
Table 32. In-state vs. Out-of-state - New* Students	11

Table 33. High School Attended of New* Students.....	12
Table 34. Enrollment by Minnesota Counties	14
Table 35. Enrollment for On-Campus Students by Minnesota Economic Regions.....	15
Table 36. Enrollment for Out-of-State Students.....	16
Table 37. Average Credit Load	16
Table 38. Fall to Following Fall Retention for New First-Time Students	17
Table 39. Degrees Awarded by Student	17
Table 40. Degrees Awarded by Degree	17
Table 41. Graduation Rates for New First-Time and Full-Time Students	17
Table 42. Status of Graduates Summary	18
Table 43. Population Estimates for MN Economic Region 1, 2 and 5 Counties and State	19
Table 44. Projected 30 Year Population for MN Economic Region 1, 2 and 5 Counties and State	19
Table 45. Projected 30 Year Population for Beltrami County by Age Group.....	20
Table 46. K-12 Enrollment for MN Economic Regions 1, 2 and 5 (combined)	20
Table 47. Beltrami County Average Unemployment Rate.....	21
Table 48. Minnesota Economic Development Regions	21

NORTHWEST TECHNICAL COLLEGE ENROLLMENT

Table 1. Fiscal Year Headcount

	FY 2007	FY 2008	FY 2009	FY 2010	FY 2011
Summer	485	457	578	660	688
Fall	1,125	1,242	1,411	1,550	1,434
Spring	1,188	1,443	1,553	1,571	1,507
Duplicated Headcount	2,798	3,142	3,542	3,781	3,629
Unduplicated Headcount	1,892	2,108	2,433	2,543	2,364

Source: ISRS CT_ST_Multiyear

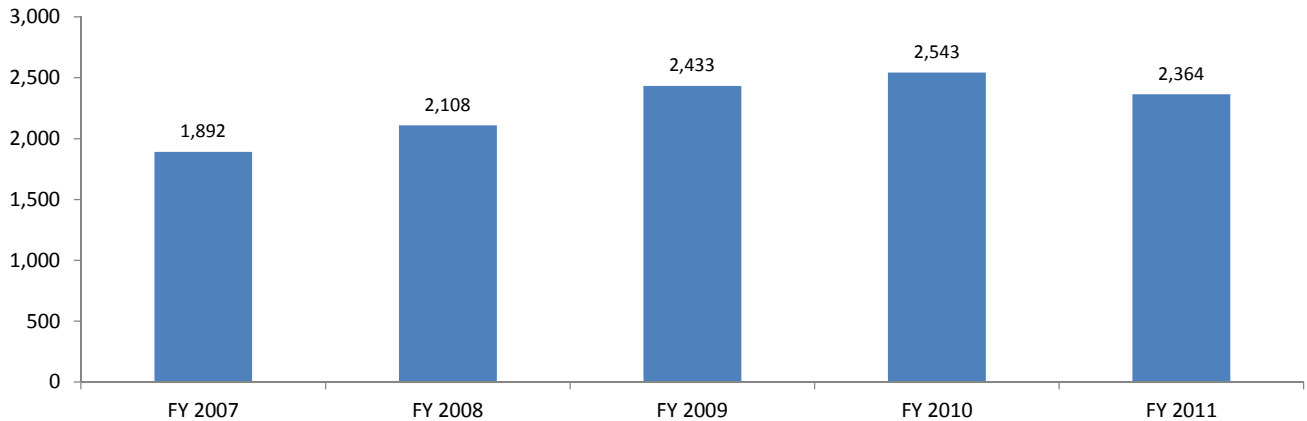


Figure 1. Unduplicated Headcount

Table 2. Student Full Year Equivalent

FY 2007	FY 2008	FY 2009	FY 2010	FY 2011	FY 2012	FY 2013	FY 2014	FY 2015
755	870	831	943	918	860	860	860	860

Source: MnSCU Finance Division, September 2011

Note: Actual for FY 2007-2011, Projected for FY 2012-2015

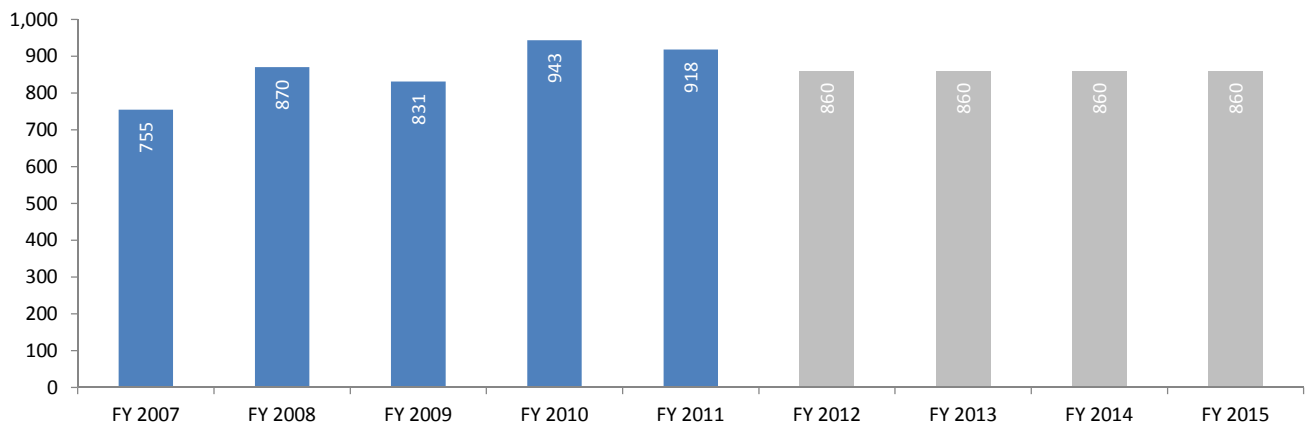


Figure 2. Student Full Year Equivalent

Table 3. Fall Semester Headcount and FTE *

	Fall 07	Fall 08	Fall 09	Fall 10	Fall 11
Headcount	1,217	1,373	1,604	1,420	1,384
FTE	809.5	792.6	919.4	863.6	815.4

Source: ST_TERM_DATA 30th day

Note: * FTE = Undergraduate Semester Hours / 15.

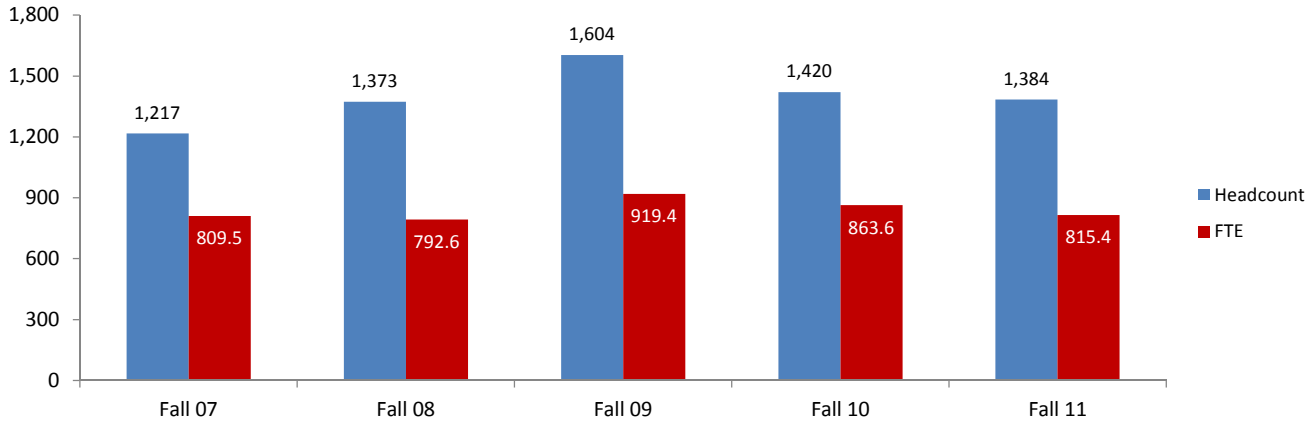


Figure 3. Fall Semester Headcount and FTE

Table 4. Student Full Year Equivalent by Course Location

	FY 2007	FY 2008	FY 2009	FY 2010	FY 2011
On-Campus	627.6	686.7	588.5	655.2	599.8
Online	127.9	183.4	242.5	288.0	318.1
Total	755.4	870.1	831.0	943.2	917.8

Source: ISRS CT_ST_Multiyear

Note: FYE = Undergraduate Semester Hours / 30.

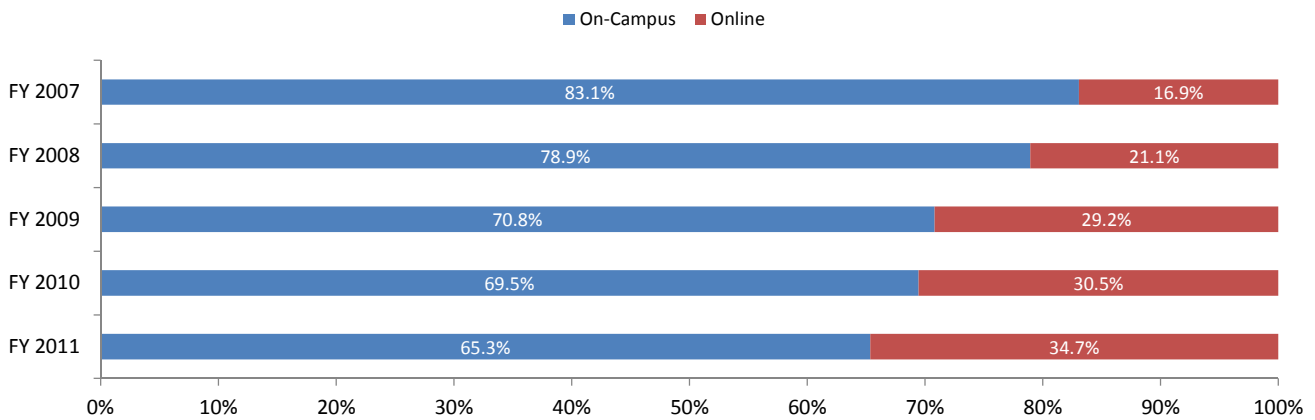


Figure 4. Student Full Year Equivalent by Course Location (percentage bar graph)

Table 5. The Number of Course Sections by Location

	FY 2007	FY 2008	FY 2009	FY 2010	FY 2011
On-Campus	518	520	493	540	492
Online	252	232	330	385	323
Total	770	752	823	925	815

Source: ISRS CT_ST_Multiyear

Table 6. Duplicated Course Enrollment by Location

	FY 2007	FY 2008	FY 2009	FY 2010	FY 2011
On-Campus	10,405	9,712	9,076	9,532	9,036
Online	4,558	4,849	7,038	8,298	7,081
Total	14,963	14,561	16,114	17,830	16,117

Source: ISRS CT_ST_Multiyear

Note: CEL = Center for Extended Learning; FY2011 is preliminary.

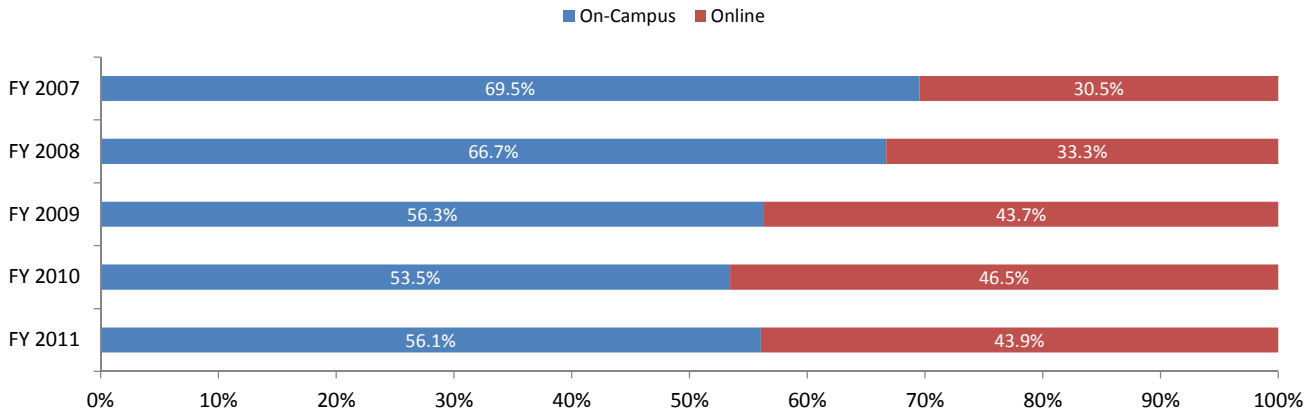


Figure 5. Duplicated Course Enrollment by Location (percentage bar graph)

Table 7. Gender Ratio

	Fall 07		Fall 08		Fall 09		Fall 10		Fall 11	
	Count	Percent	Count	Percent	Count	Percent	Count	Percent	Count	Percent
Male	366	30.1%	404	29.4%	532	33.2%	471	33.2%	411	29.7%
Female	846	69.5%	965	70.3%	1,069	66.6%	948	66.8%	972	70.2%
Unknown	5	0.4%	4	0.3%	3	0.2%	1	0.1%	1	0.1%
Total	1,217		1,373		1,604		1,420		1,384	

Source: ST_TERM_DATA 30th day

Table 8. Full-time/Part-time

	Fall 07		Fall 08		Fall 09		Fall 10		Fall 11	
	Count	Percent	Count	Percent	Count	Percent	Count	Percent	Count	Percent
Full-time	582	47.8%	508	37.0%	590	36.8%	568	40.0%	522	37.7%
Part-time	635	52.2%	865	63.0%	1,014	63.2%	852	60.0%	862	62.3%
Total	1,217		1,373		1,604		1,420		1,384	

Source: ST_TERM_DATA 30th day

Table 9. Full-time/Part-time by Gender

		Fall 07		Fall 08		Fall 09		Fall 10		Fall 11	
		Count	Percent	Count	Percent	Count	Percent	Count	Percent	Count	Percent
Full-time	Male	234	19.2%	225	16.4%	305	19.0%	282	19.9%	232	16.8%
	Female	346	28.4%	282	20.5%	284	17.7%	285	20.1%	290	21.0%
	Unknown	2	0.2%	1	0.1%	1	0.1%	1	0.1%		
Part-time	Male	132	10.8%	179	13.0%	227	14.2%	189	13.3%	179	12.9%
	Female	500	41.1%	683	49.7%	785	48.9%	663	46.7%	682	49.3%
	Unknown	3	0.2%	3	0.2%	2	0.1%			1	0.1%
Total		1,217		1,373		1,604		1,420		1,384	

Source: ST_TERM_DATA 30th day

Table 10. Full-time/Part-time by Age Groups

		Fall 07		Fall 08		Fall 09		Fall 10		Fall 11	
		Count	Percent	Count	Percent	Count	Percent	Count	Percent	Count	Percent
Full-time	15 to 17	6	0.5%	4	0.3%	2	0.1%	4	0.3%	2	0.1%
	18-20	233	19.1%	179	13.0%	180	11.2%	179	12.6%	157	11.3%
	21-24	154	12.7%	137	10.0%	135	8.4%	120	8.5%	128	9.2%
	25-29	82	6.7%	77	5.6%	93	5.8%	94	6.6%	86	6.2%
	30-39	65	5.3%	76	5.5%	98	6.1%	106	7.5%	94	6.8%
	40 plus	40	3.3%	34	2.5%	82	5.1%	64	4.5%	54	3.9%
	Unknown	2	0.2%	1	0.1%			1	0.1%	1	0.1%
Part-time	15 to 17	29	2.4%	39	2.8%	24	1.5%	16	1.1%	17	1.2%
	18-20	158	13.0%	191	13.9%	201	12.5%	161	11.3%	173	12.5%
	21-24	150	12.3%	201	14.6%	240	15.0%	205	14.4%	224	16.2%
	25-29	114	9.4%	171	12.5%	204	12.7%	168	11.8%	159	11.5%
	30-39	100	8.2%	148	10.8%	191	11.9%	149	10.5%	168	12.1%
	40 plus	82	6.7%	106	7.7%	150	9.4%	151	10.6%	117	8.5%
	Unknown	2	0.2%	9	0.7%	4	0.2%	2	0.1%	4	0.3%
Total		1,217		1,373		1,604		1,420		1,384	

Source: ST_TERM_DATA 30th day

Table 11. Average Age

	Fall 07	Fall 08	Fall 09	Fall 10	Fall 11
Full-time	24.4	25.2	27.2	26.8	26.4
Part-time	27.0	27.1	28.2	29.1	28.0
Overall	25.8	26.4	27.8	28.2	27.4

Source: ST_TERM_DATA 30th day

Table 12. Age Groups

	Fall 07		Fall 08		Fall 09		Fall 10		Fall 11	
	Count	Percent	Count	Percent	Count	Percent	Count	Percent	Count	Percent
15-17	35	2.9%	43	3.1%	26	1.6%	20	1.4%	19	1.4%
18-20	391	32.1%	370	26.9%	381	23.8%	340	23.9%	330	23.8%
21-24	304	25.0%	338	24.6%	375	23.4%	325	22.9%	352	25.4%
25-29	196	16.1%	248	18.1%	297	18.5%	262	18.5%	245	17.7%
30-39	165	13.6%	224	16.3%	289	18.0%	255	18.0%	262	18.9%
40 plus	122	10.0%	140	10.2%	232	14.5%	215	15.1%	171	12.4%
Unknown	4	0.3%	10	0.7%	4	0.2%	3	0.2%	5	0.4%
Total	1,217		1,373		1,604		1,420		1,384	

Source: ST_TERM_DATA 30th day

Table 13. Gender by Age Group for Fall 2011

	Male		Female		Unknown	
	Count	Percent	Count	Percent	Count	Percent
15-17	4	1.0%	15	1.5%		
18-20	117	28.5%	213	21.9%		
21-24	106	25.8%	246	25.3%		
25-29	62	15.1%	183	18.8%		
30-39	78	19.0%	184	18.9%		
40 plus	44	10.7%	126	13.0%	1	100.0%
Unknown			5	0.5%		
Total	411		972		1	

Source: ST_TERM_DATA 30th day

Table 14. Traditional Age (24 or less) vs. Non-Traditional Age

	Fall 07		Fall 08		Fall 09		Fall 10		Fall 11	
	Count	Percent	Count	Percent	Count	Percent	Count	Percent	Count	Percent
Traditional (Age <= 24)	727	59.7%	749	54.6%	782	48.8%	684	48.2%	701	50.7%
Non-Traditional (Age > 24)	483	39.7%	612	44.6%	818	51.0%	732	51.5%	678	49.0%
Unknown	7	0.6%	12	0.9%	4	0.2%	4	0.3%	5	0.4%
Total	1,217		1,373		1,604		1,420		1,384	

Source: ST_TERM_DATA 30th day

Table 15. On-Campus and Online

	Fall 07		Fall 08		Fall 09		Fall 10		Fall 11	
	Count	Percent	Count	Percent	Count	Percent	Count	Percent	Count	Percent
On-Campus only	643	52.8%	534	38.9%	592	36.9%	498	35.1%	467	33.7%
On-Campus with Online*	181	14.9%	263	19.2%	308	19.2%	320	22.5%	265	19.1%
NTC Online	116	9.5%	156	11.4%	190	11.8%	220	15.5%	253	18.3%
BSU ** Students	15	1.2%	20	1.5%	30	1.9%	23	1.6%	17	1.2%
Parter Institutions	252	20.7%	358	26.1%	384	23.9%	331	23.3%	382	27.6%
Drop Courses ***	10	0.8%	42	3.1%	100	6.2%	28	2.0%	N/A	
Total	1,217		1,373		1,604		1,420		1,384	

Source: ST_TERM_DATA 30th day

Note: * on-campus students who also took online course; ** Bemidji State University; *** Students registered for 2nd half courses, but dropped.

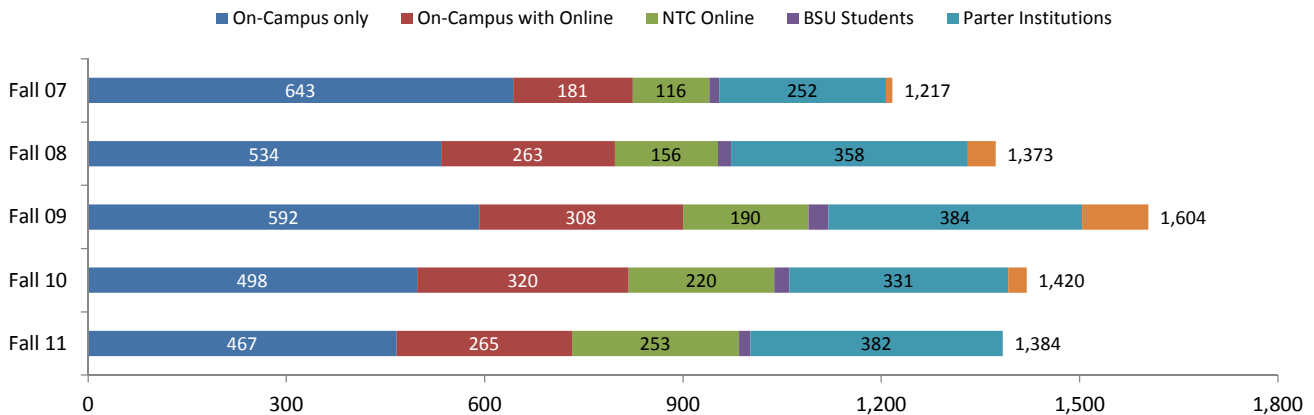


Figure 6. On-Campus and Online

Table 16. FTE * for On-Campus and Online

	Fall 07		Fall 08		Fall 09		Fall 10		Fall 11	
	Count	Percent	Count	Percent	Count	Percent	Count	Percent	Count	Percent
On-Campus only	536.9	66.3%	416.9	52.6%	477.0	51.9%	406.5	47.1%	373.1	45.8%
On-Campus with Online**	131.9	16.3%	180.2	22.7%	216.3	23.5%	235.3	27.2%	205.1	25.2%
NTC Online	66.0	8.2%	81.7	10.3%	92.5	10.0%	118.0	13.6%	122.6	15.0%
BSU *** Students	5.9	0.7%	7.5	0.9%	12.8	1.4%	8.1	1.0%	7.9	1.0%
Parter Institutions	64.5	8.0%	89.8	11.3%	94.7	10.3%	87.2	10.1%	106.7	13.1%
Drop Courses ****	4.3	0.5%	16.4	2.1%	26.0	2.8%	8.7	1.0%	N/A	
Total	809.5		792.6		919.4		863.6		815.4	

Source: ST_TERM_DATA 30th day

Note: * FTE = Undergraduate Semester Hours / 15; ** on-campus students who also took online course; *** Bemidji State University; **** Students registered for 2nd half courses, but dropped.

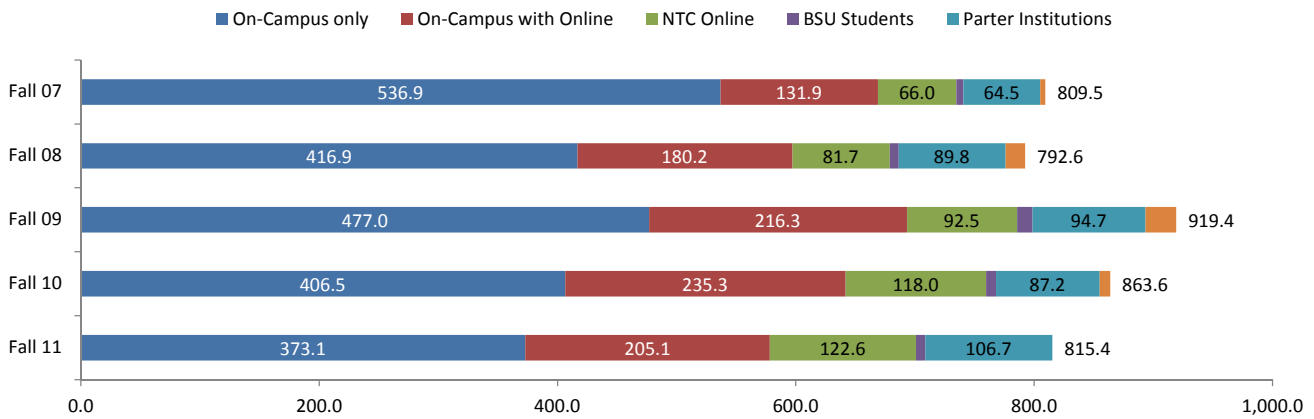


Figure 7. FTE for On-Campus and Online

Table 17. Gender by On/Off Campus and Online

		Fall 07		Fall 08		Fall 09		Fall 10		Fall 11	
		Count	Percent	Count	Percent	Count	Percent	Count	Percent	Count	Percent
Male	On-Campus*	306	25.1%	315	22.9%	404	25.2%	365	25.7%	285	20.6%
	Online/Other**	57	4.7%	82	6.0%	102	6.4%	100	7.0%	126	9.1%
	Unknown	3	0.2%	7	0.5%	26	1.6%	6	0.4%		
Female	On-Campus*	529	43.5%	500	36.4%	526	32.8%	476	33.5%	464	33.5%
	Online/Other**	311	25.6%	430	31.3%	470	29.3%	450	31.7%	508	36.7%
	Unknown	6	0.5%	35	2.5%	73	4.6%	22	1.5%		
Unknown	On-Campus*	4	0.3%	2	0.1%						
	Online/Other**			2	0.1%	2	0.1%	1	0.1%	1	0.1%
	Unknown	1	0.1%			1	0.1%				
Total		1,217		1,373		1,604		1,420		1,384	

Source: ST_TERM_DATA 30th day

Note: * the students from Bemidji State University are included; ** other includes the students from partner institutions.

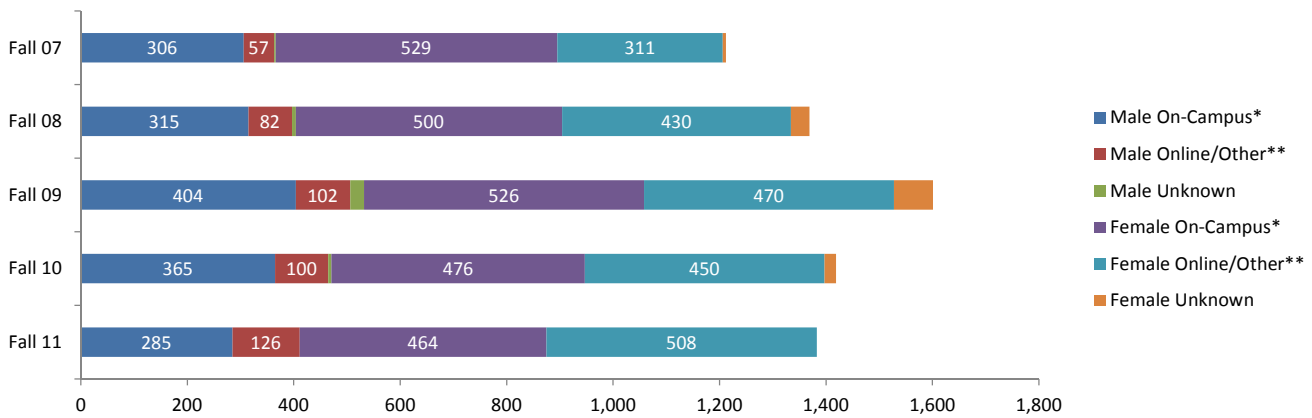


Figure 8. Gender by On/Off Campus and Online

Table 18. Traditional Age by On/Off Campus and Online

		Fall 07		Fall 08		Fall 09		Fall 10		Fall 11	
		Count	Percent	Count	Percent	Count	Percent	Count	Percent	Count	Percent
Trad (<= 24)	On-Campus*	567	46.6%	497	36.2%	503	31.4%	460	32.4%	452	32.7%
	Online/Other**	154	12.7%	227	16.5%	231	14.4%	211	14.9%	249	18.0%
	Unknown	6	0.5%	25	1.8%	48	3.0%	13	0.9%		
Non-Trad (> 24)	On-Campus*	267	21.9%	313	22.8%	425	26.5%	378	26.6%	293	21.2%
	Online/Other**	212	17.4%	284	20.7%	342	21.3%	339	23.9%	385	27.8%
	Unknown	4	0.3%	15	1.1%	51	3.2%	15	1.1%		
Unknown	On-Campus*	5	0.4%	7	0.5%	2	0.1%	3	0.2%	4	0.3%
	Online/Other**	2	0.2%	3	0.2%	1	0.1%	1	0.1%	1	0.1%
	Unknown			2	0.1%	1	0.1%				
Total		1,217		1,373		1,604		1,420		1,384	

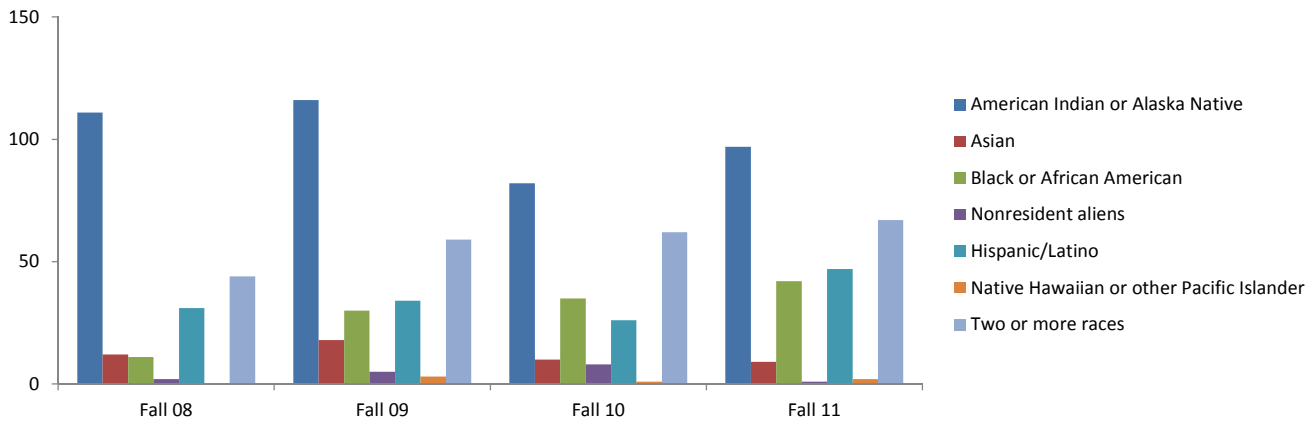
Source: ST_TERM_DATA 30th day

Note: * the students from Bemidji State University are included; ** other includes the students from partner institutions.

Table 19. Ethnicity (IPEDS definition)

	Fall 08		Fall 09		Fall 10		Fall 11	
	Count	Percent	Count	Percent	Count	Percent	Count	Percent
American Indian or Alaska Native	111	8.1%	116	7.2%	82	5.8%	97	7.0%
Asian	12	0.9%	18	1.1%	10	0.7%	9	0.7%
Black or African American	11	0.8%	30	1.9%	35	2.5%	42	3.0%
Nonresident aliens	2	0.1%	5	0.3%	8	0.6%	1	0.1%
Hispanic/Latino	31	2.3%	34	2.1%	26	1.8%	47	3.4%
Native Hawaiian or other Pacific Islander			3	0.2%	1	0.1%	2	0.1%
White	1,143	83.2%	1,324	82.5%	1,183	83.3%	1,105	79.8%
Two or more races	44	3.2%	59	3.7%	62	4.4%	67	4.8%
Unknown	19	1.4%	15	0.9%	13	0.9%	14	1.0%
Total	1,373		1,604		1,420		1,384	

Source: ST_TERM_DATA 30th day

**Figure 9. Minority (IPEDS definition) Student Headcount****Table 20. Ethnicity (duplicated)**

	Fall 08		Fall 09		Fall 10		Fall 11	
	Count	Percent	Count	Percent	Count	Percent	Count	Percent
American Indian or Alaska Native	154	10.6%	168	9.9%	132	8.7%	159	10.6%
Asian	18	1.2%	28	1.6%	25	1.6%	20	1.3%
Black or African American	21	1.4%	42	2.5%	48	3.2%	58	3.9%
Nonresident aliens	2	0.1%	5	0.3%	8	0.5%	1	0.1%
Hispanic/Latino	31	2.1%	34	2.0%	26	1.7%	47	3.1%
Native Hawaiian or other Pacific Islander	4	0.3%	10	0.6%	7	0.5%	7	0.5%
White	1,206	82.9%	1,395	82.2%	1,260	82.9%	1,196	79.6%
Unknown	19	1.3%	15	0.9%	13	0.9%	14	0.9%
Total	1,455		1,697		1,519		1,502	

Source: ST_TERM_DATA 30th day

Note: Students who identify more than one ethnicity are in each category.

Table 21. New* Students by Admission Status

	Fall 07		Fall 08		Fall 09		Fall 10		Fall 11	
	Count	Percent	Count	Percent	Count	Percent	Count	Percent	Count	Percent
Undergrad Regular	234	37.4%	186	27.0%	231	26.7%	194	29.2%	142	22.9%
Undergrad Transfer	140	22.4%	120	17.4%	171	19.7%	149	22.4%	178	28.7%
Undergrad with Prev. Degree	12	1.9%	12	1.7%	17	2.0%	9	1.4%	15	2.4%
PSEO	10	1.6%	18	2.6%	17	2.0%	18	2.7%	13	2.1%
High School, Non-PSEO	14	2.2%	10	1.5%						
Unclassified	216	34.5%	343	49.8%	430	49.7%	295	44.4%	273	44.0%
Total	626		689		866		665		621	

Source: ST_TERM_DATA 30th day

Note: * New students in Summer or Fall semester.

Table 22. New* Students by Student Level

	Fall 07		Fall 08		Fall 09		Fall 10		Fall 11	
	Count	Percent	Count	Percent	Count	Percent	Count	Percent	Count	Percent
Freshman	373	59.6%	303	44.0%	399	46.1%	334	50.2%	308	49.6%
Sophomore	1	0.2%	3	0.4%	3	0.3%	9	1.4%	12	1.9%
Previous Degree	12	1.9%	12	1.7%	17	2.0%	9	1.4%	15	2.4%
Special	240	38.3%	371	53.8%	447	51.6%	313	47.1%	286	46.1%
Total	626		689		866		665		621	

Source: ST_TERM_DATA 30th day

Note: * New students in Summer or Fall semester.

Table 23. Returned Students by Admission Status

	Fall 07		Fall 08		Fall 09		Fall 10		Fall 11	
	Count	Percent	Count	Percent	Count	Percent	Count	Percent	Count	Percent
Undergrad Regular	274	46.4%	282	41.2%	267	36.2%	242	32.1%	200	26.2%
Undergrad Transfer	213	36.0%	266	38.9%	311	42.1%	364	48.2%	381	49.9%
Undergrad with Prev. Degree	18	3.0%	26	3.8%	34	4.6%	34	4.5%	22	2.9%
PSEO	5	0.8%	4	0.6%	6	0.8%	4	0.5%	6	0.8%
High School, Non-PSEO	4	0.7%	9	1.3%						
Unclassified	77	13.0%	97	14.2%	120	16.3%	111	14.7%	146	19.1%
Unknown									8	1.0%
Total	591		684		738		755		763	

Source: ST_TERM_DATA 30th day

Table 24. Returned Students by Student Level

	Fall 07		Fall 08		Fall 09		Fall 10		Fall 11	
	Count	Percent	Count	Percent	Count	Percent	Count	Percent	Count	Percent
Freshman	208	35.2%	242	35.4%	244	33.1%	242	32.1%	257	33.7%
Sophomore	279	47.2%	306	44.7%	334	45.3%	364	48.2%	324	42.5%
Previous Degree	18	3.0%	26	3.8%	34	4.6%	34	4.5%	22	2.9%
Special	86	14.6%	110	16.1%	126	17.1%	115	15.2%	160	21.0%
Total	591		684		738		755		763	

Source: ST_TERM_DATA 30th day

Table 25. Student Level

	Fall 07		Fall 08		Fall 09		Fall 10		Fall 11	
	Count	Percent	Count	Percent	Count	Percent	Count	Percent	Count	Percent
Freshman	581	47.7%	545	39.7%	643	40.1%	576	40.6%	565	40.8%
Sophomore	280	23.0%	309	22.5%	337	21.0%	373	26.3%	336	24.3%
Previous Degree	30	2.5%	38	2.8%	51	3.2%	43	3.0%	37	2.7%
Special	326	26.8%	481	35.0%	573	35.7%	428	30.1%	446	32.2%
Total	1,217		1,373		1,604		1,420		1,384	

Source: ST_TERM_DATA 30th day

Table 26. New* / Returning Students

	Fall 07		Fall 08		Fall 09		Fall 10		Fall 11	
	Count	Percent	Count	Percent	Count	Percent	Count	Percent	Count	Percent
New	626	51.4%	689	50.2%	866	54.0%	665	46.8%	621	44.9%
Return	591	48.6%	684	49.8%	738	46.0%	755	53.2%	763	55.1%
Total	1,217		1,373		1,604		1,420		1,384	

Source: ST_TERM_DATA 30th day

Note: * New students in Summer or Fall semester.

Table 27. New* / Returning Students by Full / Part-time Status for Fall 2011

	Full-time		Part-time	
	Count	Percent	Count	Percent
New	210	40.2%	411	47.7%
Return	312	59.8%	451	52.3%
Total	522		862	

Source: ST_TERM_DATA 30th day

Note: * New students in Summer or Fall semester.

Table 28. Admission Status by On/Off Campus

	Fall 07		Fall 08		Fall 09		Fall 10		Fall 11	
	Count	Percent	Count	Percent	Count	Percent	Count	Percent	Count	Percent
On-Campus*										
Undergrad Regular	466	38.3%	406	29.6%	441	27.5%	377	26.5%	282	20.4%
Undergrad Transfer	285	23.4%	297	21.6%	380	23.7%	382	26.9%	403	29.1%
Undergrad with Prev. Degree	25	2.1%	31	2.3%	38	2.4%	32	2.3%	21	1.5%
PSEO	11	0.9%	11	0.8%	11	0.7%	13	0.9%	7	0.5%
High School, Non-PSEO	17	1.4%	18	1.3%						
Unclassified	35	2.9%	54	3.9%	60	3.7%	37	2.6%	35	2.5%
Unknown									1	0.1%
Online/Other**										
Undergrad Regular	39	3.2%	46	3.4%	54	3.4%	54	3.8%	60	4.3%
Undergrad Transfer	66	5.4%	82	6.0%	95	5.9%	124	8.7%	156	11.3%
Undergrad with Prev. Degree	5	0.4%	7	0.5%	13	0.8%	11	0.8%	16	1.2%
PSEO	4	0.3%	11	0.8%	11	0.7%	9	0.6%	12	0.9%
High School, Non-PSEO	1	0.1%								
Unclassified	253	20.8%	368	26.8%	401	25.0%	353	24.9%	384	27.7%
Unknown									7	0.5%
Unknown (Drop Courses)										
Undergrad Regular	3	0.2%	16	1.2%	3	0.2%	5	0.4%		
Undergrad Transfer	2	0.2%	7	0.5%	7	0.4%	7	0.5%		
Undergrad with Prev. Degree										
PSEO					1	0.1%				
High School, Non-PSEO			1	0.1%						
Unclassified	5	0.4%	18	1.3%	89	5.5%	16	1.1%		
Total	1,217		1,373		1,604		1,420		1,384	

Source: ST_TERM_DATA 30th day

Note: * the students from Bemidji State University are included; ** other includes the students from partner institutions.

Table 29. Ethnicity (IPEDS definition) of New* Students

	Fall 08		Fall 09		Fall 10		Fall 11	
	Count	Percent	Count	Percent	Count	Percent	Count	Percent
American Indian or Alaska Native	54	7.8%	62	7.2%	40	6.0%	35	5.6%
Asian	7	1.0%	14	1.6%	3	0.5%	2	0.3%
Black or African American	7	1.0%	25	2.9%	23	3.5%	25	4.0%
Nonresident aliens	1	0.1%	2	0.2%	4	0.6%		
Hispanic/Latino	18	2.6%	17	2.0%	11	1.7%	30	4.8%
Native Hawaiian or other Pacific Islander			3	0.3%			1	0.2%
White	570	82.7%	706	81.5%	546	82.1%	490	78.9%
Two or more races	19	2.8%	28	3.2%	33	5.0%	28	4.5%
Unknown	13	1.9%	9	1.0%	5	0.8%	10	1.6%
Total	689		866		665		621	

Source: ST_TERM_DATA 30th day

Note: * New students in Summer or Fall semester.

Table 30. Ethnicity (duplicated) of New* Students

	Fall 08		Fall 09		Fall 10		Fall 11	
	Count	Percent	Count	Percent	Count	Percent	Count	Percent
American Indian or Alaska Native	73	10.0%	85	9.4%	67	9.4%	62	9.1%
Asian	11	1.5%	19	2.1%	11	1.5%	8	1.2%
Black or African American	13	1.8%	30	3.3%	29	4.1%	33	4.9%
Nonresident aliens	1	0.1%	2	0.2%	4	0.6%	0	0.0%
Hispanic/Latino	18	2.5%	17	1.9%	11	1.5%	30	4.4%
Native Hawaiian or other Pacific Islander	3	0.4%	7	0.8%	3	0.4%	3	0.4%
White	600	82.0%	739	81.4%	585	81.8%	532	78.5%
Unknown	13	1.8%	9	1.0%	5	0.7%	10	1.5%
Total	732		908		715		678	

Source: ST_TERM_DATA 30th day

Note: * New students in Summer or Fall semester. Students who identify more than one ethnicity are in each category.

Table 31. In-state vs. Out-of-state

	Fall 07		Fall 08		Fall 09		Fall 10		Fall 11	
	Count	Percent	Count	Percent	Count	Percent	Count	Percent	Count	Percent
In State	1,011	83.1%	1,118	81.4%	1,355	84.5%	1,226	86.3%	1,171	84.6%
Out of State	192	15.8%	222	16.2%	236	14.7%	191	13.5%	211	15.2%
Unknown	14	1.2%	33	2.4%	13	0.8%	3	0.2%	2	0.1%
Total	1,217		1,373		1,604		1,420		1,384	

Source: ST_TERM_DATA 30th day

Note: This table is based on the student's resident status; * undergraduate.

Table 32. In-state vs. Out-of-state - New* Students

	Fall 07		Fall 08		Fall 09		Fall 10		Fall 11	
	Count	Percent	Count	Percent	Count	Percent	Count	Percent	Count	Percent
In State	497	79.4%	506	73.4%	710	82.0%	547	82.30%	493	79.4%
Out of State	122	19.5%	160	23.2%	148	17.1%	118	17.70%	127	20.5%
Unknown	7	1.1%	23	3.3%	8	0.9%			1	0.2%
Total	626		689		866		665		621	

Source: ST_TERM_DATA 30th day

Note: This table is based on the student's resident status; * New students in Summer or Fall semester.

Table 33. High School Attended of New* Students

	Fall 07		Fall 08		Fall 09		Fall 10		Fall 11	
	Count	Percent	Count	Percent	Count	Percent	Count	Percent	Count	Percent
Bemidji High School	79	12.6%	62	9.0%	52	6.0%	51	7.7%	50	8.1%
Bagley High School	13	2.1%	10	1.5%	13	1.5%	13	2.0%	21	3.4%
Lincoln Senior High School	6	1.0%	6	0.9%	7	0.8%	7	1.1%	18	2.9%
Blackduck Secondary School	22	3.5%	11	1.6%	17	2.0%	11	1.7%	16	2.6%
Park Rapids Area High School	9	1.4%	15	2.2%	14	1.6%	8	1.2%	13	2.1%
Clearbrook-Gonvick HS	4	0.6%	7	1.0%	8	0.9%	6	0.9%	10	1.6%
Cass Lake-Bena High School	14	2.2%	9	1.3%	9	1.0%	10	1.5%	8	1.3%
Roseau High School	3	0.5%	4	0.6%	11	1.3%	4	0.6%	8	1.3%
Walker-Hackensack-Akeley HS	8	1.3%	9	1.3%	11	1.3%	4	0.6%	8	1.3%
Deer River High School	7	1.1%	2	0.3%	5	0.6%	1	0.2%	6	1.0%
Fosston High School	6	1.0%	2	0.3%	9	1.0%	10	1.5%	6	1.0%
Grygla School	1	0.2%	3	0.4%	4	0.5%		0.0%	6	1.0%
Nevis High School	5	0.8%	2	0.3%	5	0.6%	4	0.6%	6	1.0%
Greenbush/Middle River HS	1	0.2%	1	0.1%	2	0.2%	4	0.6%	5	0.8%
Brainerd Senior High School	1	0.2%	1	0.1%	3	0.3%	3	0.5%	4	0.6%
Crookston High School	3	0.5%	3	0.4%	4	0.5%	5	0.8%	4	0.6%
Elk River High School		0.0%	1	0.1%	1	0.1%	2	0.3%	4	0.6%
Grand Rapids High School	3	0.5%	5	0.7%	8	0.9%	4	0.6%	4	0.6%
Lafayette High School	4	0.6%	4	0.6%	4	0.5%		0.0%	4	0.6%
Little Falls Community HS		0.0%	3	0.4%	1	0.1%	1	0.2%	4	0.6%
Paynesville Senior HS		0.0%		0.0%		0.0%	1	0.2%	4	0.6%
Red Lake High School	4	0.6%	9	1.3%	5	0.6%	12	1.8%	4	0.6%
Senior High School	3	0.5%	3	0.4%	4	0.5%	6	0.9%	4	0.6%
Stephen-Argyle Central		0.0%	1	0.1%	3	0.3%		0.0%	4	0.6%
Warroad High School	8	1.3%	5	0.7%	7	0.8%	7	1.1%	4	0.6%
Anoka High School	2	0.3%	1	0.1%	2	0.2%	2	0.3%	3	0.5%
Duluth East High School	3	0.5%	1	0.1%	1	0.1%	1	0.2%	3	0.5%
Grand Forks Central HS	1	0.2%	2	0.3%	1	0.1%	1	0.2%	3	0.5%
Greenway High School	2	0.3%	2	0.3%	1	0.1%	1	0.2%	3	0.5%
Heritage Christian School		0.0%	1	0.1%	2	0.2%	2	0.3%	3	0.5%
Jefferson Senior High School	3	0.5%	3	0.4%	8	0.9%	14	2.1%	3	0.5%
Long Prairie-Grey Eagle HS		0.0%		0.0%	1	0.1%	2	0.3%	3	0.5%
Minnesota Virtual High School		0.0%		0.0%		0.0%	1	0.2%	3	0.5%
Morris Area High School	1	0.2%	2	0.3%	3	0.3%	1	0.2%	3	0.5%
Northome High School	2	0.3%	3	0.4%	6	0.7%	3	0.5%	3	0.5%
Onamia High School		0.0%		0.0%	1	0.1%		0.0%	3	0.5%
Osakis Jr-Sr High School	1	0.2%	2	0.3%	2	0.2%		0.0%	3	0.5%
Wadena-Deer Creek HS	2	0.3%	4	0.6%	7	0.8%	1	0.2%	3	0.5%
Babbitt-Embarrass High School	2	0.3%		0.0%	2	0.2%		0.0%	2	0.3%
Becker High School	1	0.2%		0.0%	1	0.1%		0.0%	2	0.3%
Belgrade-Brooten-Elrosa HS		0.0%		0.0%		0.0%		0.0%	2	0.3%
Brandon High School		0.0%		0.0%	1	0.1%		0.0%	2	0.3%
Cass Lake Area Learning Ctr	1	0.2%		0.0%	1	0.1%	4	0.6%	2	0.3%
Centennial High School	1	0.2%		0.0%	2	0.2%	4	0.6%	2	0.3%
Coon Rapids High School		0.0%	1	0.1%		0.0%	1	0.2%	2	0.3%
Delano Senior High School		0.0%		0.0%	3	0.3%		0.0%	2	0.3%
Denfeld High School		0.0%		0.0%		0.0%	2	0.3%	2	0.3%
Eagan High School		0.0%		0.0%		0.0%		0.0%	2	0.3%
Eden Prairie High School	1	0.2%		0.0%	3	0.3%	1	0.2%	2	0.3%
Hutchinson High School		0.0%		0.0%		0.0%		0.0%	2	0.3%
John Marshall High School		0.0%		0.0%		0.0%	3	0.5%	2	0.3%
Kittson Central High School	2	0.3%	1	0.1%	1	0.1%	2	0.3%	2	0.3%
Lac Qui Parle Valley HS		0.0%	2	0.3%		0.0%	1	0.2%	2	0.3%
Litchfield Senior High School	1	0.2%		0.0%	1	0.1%	2	0.3%	2	0.3%
Mahnomen High School	2	0.3%	3	0.4%	1	0.1%	2	0.3%	2	0.3%

(Table 33. contd.)

Marshall County Central HS	4	0.6%	2	0.3%	2	0.2%		0.0%	2	0.3%
Marshfield Senior High School		0.0%		0.0%		0.0%		0.0%	2	0.3%
Melrose Area High School	1	0.2%	1	0.1%	3	0.3%	1	0.2%	2	0.3%
Minnewaska Area HS		0.0%		0.0%	2	0.2%		0.0%	2	0.3%
Osseo High School	4	0.6%		0.0%	1	0.1%		0.0%	2	0.3%
Red Lake County Central HS	1	0.2%	4	0.6%	1	0.1%	3	0.5%	2	0.3%
Rocori High School	1	0.2%		0.0%		0.0%		0.0%	2	0.3%
Roseville Area High School		0.0%		0.0%	2	0.2%	3	0.5%	2	0.3%
Saint Francis High School	1	0.2%	2	0.3%		0.0%		0.0%	2	0.3%
Staples Motley High School	2	0.3%	2	0.3%	2	0.2%		0.0%	2	0.3%
Treknorth High School	1	0.2%	5	0.7%	6	0.7%	2	0.3%	2	0.3%
MN - Other High Schools	172	27.5%	157	22.8%	300	34.6%	221	33.2%	104	16.7%
<i># HS included in "Other HS"</i>	<i>131</i>		<i>119</i>		<i>186</i>		<i>151</i>		<i>109</i>	
Other - GED	36	5.8%	68	9.9%	103	11.9%	74	11.1%	53	8.5%
Other - Home School	12	1.9%	13	1.9%	9	1.0%	15	2.3%	10	1.6%
Unknown	30	4.8%	46	6.7%	21	2.4%	3	0.5%	6	1.0%
Other States	122	19.5%	160	23.2%	148	17.1%	118	17.7%	127	20.5%
Other/Unknown	7	1.1%	23	3.3%	8	0.9%		0.0%	1	0.2%
Total	626		689		866	100.0%	665		621	

Source: ST_TERM_DATA 30th day

Note: * New students in Summer or Fall semester.

Table 34. Enrollment by Minnesota Counties

	Fall 07		Fall 08		Fall 09		Fall 10		Fall 11	
	Count	Percent	Count	Percent	Count	Percent	Count	Percent	Count	Percent
Beltrami	462	38.0%	501	36.5%	612	38.2%	518	36.5%	471	34.0%
Clearwater	70	5.8%	67	4.9%	71	4.4%	76	5.4%	79	5.7%
Cass	49	4.0%	47	3.4%	49	3.1%	55	3.9%	68	4.9%
Hubbard	70	5.8%	74	5.4%	88	5.5%	82	5.8%	68	4.9%
Polk	46	3.8%	32	2.3%	41	2.6%	59	4.2%	53	3.8%
Roseau	20	1.6%	19	1.4%	35	2.2%	37	2.6%	47	3.4%
Pennington	10	0.8%	23	1.7%	25	1.6%	31	2.2%	32	2.3%
Douglas	11	0.9%	8	0.6%	19	1.2%	30	2.1%	28	2.0%
Itasca	27	2.2%	23	1.7%	30	1.9%	21	1.5%	25	1.8%
Saint Louis	16	1.3%	16	1.2%	21	1.3%	16	1.1%	21	1.5%
Stearns	3	0.2%	6	0.4%	16	1.0%	19	1.3%	21	1.5%
Marshall	10	0.8%	16	1.2%	20	1.2%	13	0.9%	20	1.4%
Hennepin	11	0.9%	14	1.0%	19	1.2%	25	1.8%	17	1.2%
Dakota	5	0.4%	9	0.7%	13	0.8%	10	0.7%	14	1.0%
Red Lake	5	0.4%	8	0.6%	8	0.5%	4	0.3%	11	0.8%
Crow Wing	8	0.7%	12	0.9%	9	0.6%	8	0.6%	10	0.7%
Kittson	9	0.7%	5	0.4%	5	0.3%	6	0.4%	10	0.7%
Becker	16	1.3%	22	1.6%	41	2.6%	14	1.0%	9	0.7%
Sherburne	2	0.2%	5	0.4%	4	0.2%	7	0.5%	9	0.7%
Wright		0.0%	6	0.4%	9	0.6%	9	0.6%	8	0.6%
Koochiching	17	1.4%	16	1.2%	17	1.1%	12	0.8%	7	0.5%
Lake of the Woods	16	1.3%	12	0.9%	10	0.6%	7	0.5%	7	0.5%
Morrison	5	0.4%	4	0.3%	5	0.3%	7	0.5%	7	0.5%
Anoka	6	0.5%	6	0.4%	3	0.2%	10	0.7%	6	0.4%
Clay	8	0.7%	23	1.7%	29	1.8%	6	0.4%	6	0.4%
Ramsey	5	0.4%	7	0.5%	4	0.2%	5	0.4%	6	0.4%
Stevens	1	0.1%	3	0.2%	2	0.1%	3	0.2%	6	0.4%
Meeker	4	0.3%	4	0.3%	4	0.2%	2	0.1%	5	0.4%
Mille Lacs	4	0.3%	1	0.1%	1	0.1%	3	0.2%	5	0.4%
Swift		0.0%		0.0%		0.0%	3	0.2%	5	0.4%
Todd	13	1.1%	8	0.6%	11	0.7%	1	0.1%	5	0.4%
Benton		0.0%	1	0.1%	2	0.1%	6	0.4%	4	0.3%
Olmsted	2	0.2%	2	0.1%		0.0%	4	0.3%	4	0.3%
Pope		0.0%	6	0.4%	6	0.4%	5	0.4%	4	0.3%
Scott		0.0%	2	0.1%	5	0.3%	4	0.3%	4	0.3%
Big Stone		0.0%	2	0.1%		0.0%		0.0%	3	0.2%
Goodhue	1	0.1%	3	0.2%	6	0.4%	4	0.3%	3	0.2%
Isanti	2	0.2%	1	0.1%		0.0%	2	0.1%	3	0.2%
Mahnomen	4	0.3%	6	0.4%	3	0.2%	3	0.2%	3	0.2%
Otter Tail	20	1.6%	32	2.3%	37	2.3%	9	0.6%	3	0.2%
MN-Other Counties	58	4.8%	68	5.0%	72	4.5%	70	4.9%	31	2.2%
<i># counties included</i>	24		28		29		30		22	
MN Total	1,016	83.5%	1,120	81.6%	1,352	84.3%	1,206	84.9%	1,148	82.9%
Other States	150	12.3%	195	14.2%	198	12.3%	161	11.3%	180	13.0%
Unknown	51	4.2%	58	4.2%	54	3.4%	53	3.7%	56	4.0%
Total	1,217		1,373		1,604		1,420		1,384	

Source: ST_TERM_DATA 30th day

Note: This table is created based on the student's permanent address (zip code).

Table 35. Enrollment for On-Campus Students by Minnesota Economic Regions

	Fall 07		Fall 08		Fall 09		Fall 10		Fall 11	
	Count	Percent	Count	Percent	Count	Percent	Count	Percent	Count	Percent
On-Campus Only*										
RGN 1: Northwest	23	3.8%	15	2.8%	18	2.9%	11	2.3%	23	5.2%
RGN 2: Headwaters	436	71.7%	399	75.7%	472	77.3%	353	73.7%	329	73.8%
RGN 3: Arrowhead	43	7.1%	31	5.9%	33	5.4%	28	5.8%	20	4.5%
RGN 4: West Central	6	1.0%	8	1.5%	12	2.0%	11	2.3%	7	1.6%
RGN 5: North Central	53	8.7%	32	6.1%	33	5.4%	33	6.9%	34	7.6%
RGN 6E: Southwest Central	4	0.7%	3	0.6%	1	0.2%	1	0.2%	3	0.7%
RGN 6W: Upper MN Valley		0.0%		0.0%	1	0.2%	1	0.2%	1	0.2%
RGN 7E: East Central	8	1.3%	5	0.9%	4	0.7%	2	0.4%	3	0.7%
RGN 7W: Central	3	0.5%	11	2.1%	15	2.5%	8	1.7%	7	1.6%
RGN 8: Southwest	1	0.2%	1	0.2%	1	0.2%	2	0.4%	1	0.2%
RGN 9: South Central	6	1.0%	2	0.4%	1	0.2%	4	0.8%	2	0.4%
RGN 10: Southeast	4	0.7%	6	1.1%	4	0.7%	4	0.8%	3	0.7%
RGN 11: 7 County Twin Cities	21	3.5%	14	2.7%	16	2.6%	21	4.4%	13	2.9%
On-Campus Only Total	608	100.0%	527	100.0%	611	100.0%	479	100.0%	446	100.0%

On-Campus and Online										
RGN 1: Northwest	7	4.1%	8	3.3%	12	4.0%	10	3.3%	5	2.0%
RGN 2: Headwaters	133	77.8%	169	69.5%	227	75.9%	233	77.2%	187	74.5%
RGN 3: Arrowhead	10	5.8%	16	6.6%	18	6.0%	8	2.6%	10	4.0%
RGN 4: West Central	3	1.8%	10	4.1%	6	2.0%	5	1.7%	6	2.4%
RGN 5: North Central	12	7.0%	22	9.1%	26	8.7%	24	7.9%	23	9.2%
RGN 6E: Southwest Central	2	1.2%	1	0.4%	1	0.3%	1	0.3%	1	0.4%
RGN 6W: Upper MN Valley		0.0%	2	0.8%		0.0%	1	0.3%	1	0.4%
RGN 7E: East Central	2	1.2%	1	0.4%	1	0.3%	5	1.7%	3	1.2%
RGN 7W: Central	1	0.6%	1	0.4%	1	0.3%	4	1.3%	4	1.6%
RGN 8: Southwest		0.0%		0.0%		0.0%	1	0.3%	1	0.4%
RGN 9: South Central		0.0%	5	2.1%		0.0%		0.0%		0.0%
RGN 10: Southeast		0.0%	2	0.8%		0.0%	2	0.7%	1	0.4%
RGN 11: 7 County Twin Cities	1	0.6%	6	2.5%	7	2.3%	8	2.6%	9	3.6%
On-Campus and Online Total	171	100.0%	243	100.0%	299	100.0%	302	100.0%	251	100.0%

Online (Off-Campus)										
RGN 1: Northwest	71	31.0%	79	25.2%	90	24.2%	126	31.3%	145	32.2%
RGN 2: Headwaters	49	21.4%	69	22.0%	75	20.2%	91	22.6%	112	24.8%
RGN 3: Arrowhead	11	4.8%	14	4.5%	23	6.2%	19	4.7%	29	6.4%
RGN 4: West Central	49	21.4%	81	25.9%	102	27.4%	54	13.4%	45	10.0%
RGN 5: North Central	19	8.3%	28	8.9%	22	5.9%	22	5.5%	34	7.5%
RGN 6E: Southwest Central	5	2.2%	3	1.0%	8	2.2%	8	2.0%	6	1.3%
RGN 6W: Upper MN Valley		0.0%	2	0.6%	1	0.3%	5	1.2%	7	1.6%
RGN 7E: East Central	4	1.7%	2	0.6%	2	0.5%	3	0.7%	3	0.7%
RGN 7W: Central	1	0.4%	6	1.9%	12	3.2%	28	7.0%	31	6.9%
RGN 8: Southwest		0.0%		0.0%		0.0%	2	0.5%	2	0.4%
RGN 9: South Central	1	0.4%	5	1.6%	5	1.3%	3	0.7%		0.0%
RGN 10: Southeast	5	2.2%	4	1.3%	5	1.3%	7	1.7%	10	2.2%
RGN 11: 7 County Twin Cities	14	6.1%	20	6.4%	27	7.3%	34	8.5%	27	6.0%
Online (Off-Campus) Total	229	100.0%	313	100.0%	372	100.0%	402	100.0%	451	100.0%

Source: ST_TERM_DATA 30th day

Note: This table is created based on the student's permanent address (zip code); * the students from Bemidji State University are included; ** other includes the students from partner institutions.

Table 36. Enrollment for Out-of-State Students

	Fall 07		Fall 08		Fall 09		Fall 10		Fall 11	
	Count	Percent	Count	Percent	Count	Percent	Count	Percent	Count	Percent
ND	127	84.7%	165	84.6%	163	82.3%	122	75.8%	137	76.1%
WI	7	4.7%	11	5.6%	5	2.5%	6	3.7%	13	7.2%
IL	1	0.7%			5	2.5%	4	2.5%	7	3.9%
SD	4	2.7%	1	0.5%	5	2.5%	5	3.1%	4	2.2%
TX					1	0.5%	4	2.5%	3	1.7%
FL			1	0.5%	2	1.0%	3	1.9%	2	1.1%
GA			1	0.5%			1	0.6%	2	1.1%
MT	1	0.7%	3	1.5%	1	0.5%	1	0.6%	2	1.1%
NJ			1	0.5%	1	0.5%	1	0.6%	2	1.1%
NY									2	1.1%
AE									1	0.6%
IN									1	0.6%
KY									1	0.6%
NE			1	0.5%	2	1.0%	3	1.9%	1	0.6%
OH									1	0.6%
SC									1	0.6%
Other Out-of-State	10	6.7%	11	5.6%	13	6.6%	11	6.8%	0	0.0%
<i># States Included</i>	7		10		9		10		0	
Out-of-State Total	150		195		198		161		180	

Source: ST_TERM_DATA 30th day

Note: This table is created based on the student's permanent address (zip code).

Table 37. Average Credit Load

	Fall 07	Fall 08	Fall 09	Fall 10	Fall 11
Full-time	14.8	14.4	14.5	14.6	14.4
Part-time	5.5	5.3	5.1	5.5	5.4
Overall	10.0	8.7	8.6	9.1	8.8

Source: ST_TERM_DATA 30th day

Table 38. Fall to Following Fall Retention for New First-Time Students

Cohort Year	Status	Cohort	Retention Rate
Fall 2003	FT	291	45.4%
	PT	53	41.5%
Fall 2004	FT	224	43.3%
	PT	63	23.8%
Fall 2005	FT	197	41.6%
	PT	30	20.0%
Fall 2006	FT	163	40.5%
	PT	68	35.3%
Fall 2007	FT	167	40.1%
	PT	68	25.0%
Fall 2008	FT	114	36.8%
	PT	58	41.4%
Fall 2009	FT	170	48.2%
	PT	58	36.2%

Source: MNSCU Student Persistence Database

Table 39. Degrees Awarded by Student

	2007	2008	2009	2010	2011
Associates in Applied Science	97	64	96	84	98
Associate in Science		44	47	60	44
Certificate	64	133	115	193	141
Diploma	123	146	110	112	162
Total	284	387	368	449	445

Source: ISRS ST_AWARDS

Table 40. Degrees Awarded by Degree

	2007	2008	2009	2010	2011
Associates in Applied Science	103	69	102	87	118
Associate in Science		45	49	62	48
Certificate	69	135	120	205	184
Diploma	125	150	126	135	191
Total	297	399	397	489	541

Source: ISRS ST_AWARDS

Table 41. Graduation Rates for New First-Time and Full-Time Students

Cohort Year	Cohort	Completed within 150% time	Graduation Rate
Fall 2003	291	129	44.3%
Fall 2004	225	86	38.2%
Fall 2005	197	64	32.5%
Fall 2006	163	47	28.8%
Fall 2007	167	53	31.7%

Source: IPEDS Graduation Rate Calculated by MNSCU Office of Research and Planning

Table 42. Status of Graduates Summary

	<i>Total Graduates</i>	<i>Related Work FT</i>	<i>Related Work PT</i>	<i>Continuing Education</i>	<i>Continuing Education %</i>	<i>Unrelated Work Seeking Related</i>	<i>Available for Work but Unemployed</i>	<i>Unrelated Work Not Seeking Related</i>	<i>Unavailable for Work</i>	<i>Status Unknown</i>	<i>Total Related Work</i>	<i>Total Available for Related Work</i>	<i>Total Related Employment Rate</i>
2004	271	89	45	20	7.4%	19	14	10	4	70	134	167	80.2%
2005	263	98	36	44	16.7%	22	21	1	19	22	134	177	75.7%
2006	212	102	38	39	18.4%	6	11	2	2	12	140	157	89.2%
2007	295	137	32	69	23.4%	15	19	1	5	17	169	203	83.3%
2008	399	141	50	135	33.8%	9	18	3	15	28	191	218	87.6%
2009	397	131	54	133	33.5%	14	11	7	6	41	185	210	88.1%
2010	489	188	122	35	7.2%	8	14	6	20	96	310	332	93.4%

Source: MnSCU Graduate Follow-up Survey

REGIONAL POPULATION & EMPLOYMENT

Table 43. Population Estimates for MN Economic Region 1, 2 and 5 Counties and State

	2000	2006	2007	2008	2009	2010	% Change 2000-2010	% Change 2006-2010
Kittson	5,285	4,723	4,678	4,615	4,475	4,552	-13.9%	-3.6%
Marshall	10,155	9,955	9,781	9,648	9,477	9,439	-7.1%	-5.2%
Norman	7,442	6,936	6,822	6,789	6,628	6,852	-7.9%	-1.2%
Pennington	13,584	13,668	13,708	13,694	13,738	13,930	2.5%	1.9%
Polk	31,369	31,115	31,023	30,854	30,817	31,600	0.7%	1.6%
Red Lake	4,299	4,195	4,122	4,111	4,157	4,089	-4.9%	-2.5%
Roseau	16,338	16,361	16,177	16,010	15,921	15,629	-4.3%	-4.5%
Beltrami	39,650	43,094	43,320	43,861	44,173	44,442	12.1%	3.1%
Clearwater	8,423	8,453	8,314	8,247	8,232	8,695	3.2%	2.9%
Hubbard	18,376	18,925	18,891	18,823	18,753	20,428	11.2%	7.9%
Lake of the Woods	4,522	4,360	4,279	3,999	3,903	4,045	-10.5%	-7.2%
Mahnomen	5,190	5,068	5,074	5,085	5,025	5,413	4.3%	6.8%
Cass	27,150	28,949	28,743	28,654	28,338	28,567	5.2%	-1.3%
Crow Wing	55,099	61,038	61,390	61,739	62,370	62,500	13.4%	2.4%
Morrison	31,712	32,997	32,947	32,831	32,722	33,198	4.7%	0.6%
Todd	24,426	24,469	24,347	24,065	23,864	24,895	1.9%	1.7%
Wadena	13,713	13,615	13,573	13,532	13,381	13,843	0.9%	1.7%
RGN 1: Northwest	88,472	86,953	86,311	85,721	85,213	86,091	-2.7%	-1.0%
RGN 2: Headwaters	76,161	79,900	79,878	80,015	80,086	83,023	9.0%	3.9%
RGN 5: North Central	152,100	161,068	161,000	160,821	160,675	163,003	7.2%	1.2%
Minnesota	4,919,492	5,231,106	5,263,493	5,287,976	5,300,942	5,303,925	7.8%	1.4%

Source: Minnesota State Demographic Center

Table 44. Projected 30 Year Population for MN Economic Region 1, 2 and 5 Counties and State

	2005	2010	2015	2020	2025	2030	2035	% Change 2005-2015	% Change 2005-2035
Kittson	4,836	4,420	4,190	4,000	3,870	3,720	3,620	-13.4%	-25.1%
Marshall	10,063	9,860	9,900	9,990	10,060	10,010	9,960	-1.6%	-1.0%
Norman	7,072	6,900	6,940	6,990	7,080	7,040	7,000	-1.9%	-1.0%
Pennington	13,755	14,050	14,410	14,760	15,090	15,210	15,350	4.8%	11.6%
Polk	31,451	31,850	32,610	33,370	34,060	34,280	34,530	3.7%	9.8%
Red Lake	4,360	4,350	4,440	4,520	4,590	4,600	4,610	1.8%	5.7%
Roseau	16,689	17,080	17,700	18,330	18,840	19,170	19,430	6.1%	16.4%
Beltrami	43,334	46,590	49,720	52,380	54,750	56,430	57,900	14.7%	33.6%
Clearwater	8,564	8,790	9,060	9,270	9,410	9,470	9,530	5.8%	11.3%
Hubbard	19,044	19,560	20,220	20,840	21,350	21,430	21,480	6.2%	12.8%
Lake of the Woods	4,463	4,410	4,420	4,500	4,550	4,530	4,500	-1.0%	0.8%
Mahnomen	5,167	5,120	5,110	5,100	5,110	5,060	5,020	-1.1%	-2.8%
Cass	29,196	31,040	32,860	34,500	35,810	36,250	36,600	12.5%	25.4%
Crow Wing	60,556	65,220	69,810	73,960	77,520	79,750	81,610	15.3%	34.8%
Morrison	33,149	34,480	36,050	37,470	38,630	39,450	40,110	8.8%	21.0%
Todd	24,859	25,200	25,720	26,230	26,620	26,630	26,660	3.5%	7.2%
Wadena	13,787	14,110	14,470	14,830	15,210	15,300	15,440	5.0%	12.0%
RGN 1: Northwest	88,226	88,510	90,190	91,960	93,590	94,030	94,500	2.2%	7.1%
RGN 2: Headwaters	80,572	84,470	88,530	92,090	95,170	96,920	98,430	9.9%	22.2%
RGN 5: North Central	161,547	170,050	178,910	186,990	193,790	197,380	200,420	10.7%	24.1%
Minnesota	5,192,122	5,446,530	5,709,700	5,943,240	6,135,060	6,297,950	6,446,270	10.0%	24.2%

Source: Minnesota State Demographic Center, April 2007

Note: These projections are based on 2000 Census data.

Table 45. Projected 30 Year Population for Beltrami County by Age Group

	2005	2010	2015	2020	2025	2030	2035
15-19	3,908	3,771	3,651	4,019	4,349	4,400	4,401
20-24	4,939	4,639	4,511	4,270	4,591	4,810	4,899
60-64	1,564	2,290	2,780	3,221	3,088	2,720	2,611
70-74	1,204	1,310	1,459	2,112	2,570	2,990	2,909

Source: Minnesota State Demographic Center, April 2007
 Note: These projections are based on 2000 Census data.

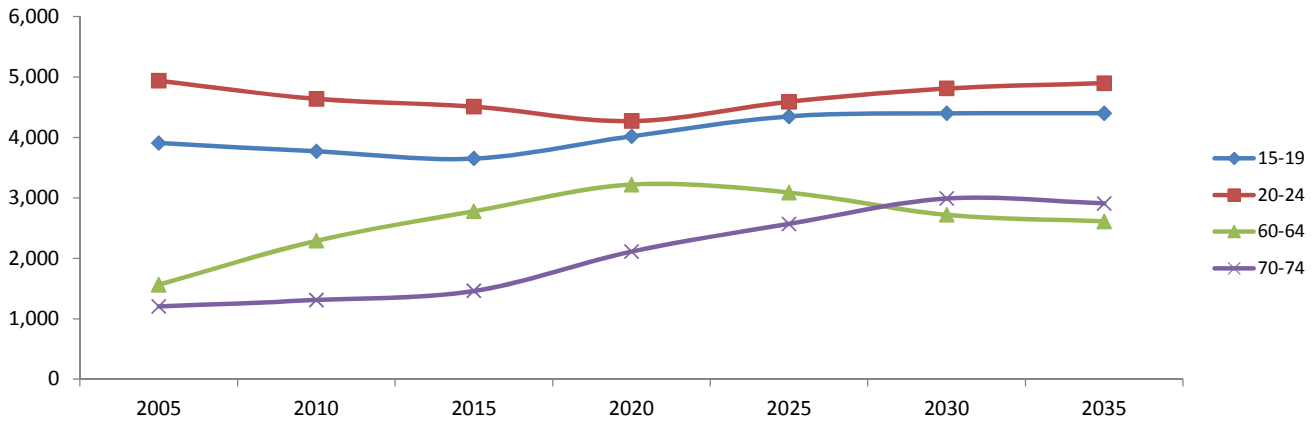


Figure 10. Projected 30 Year Population for Beltrami County by Age Group

Table 46. K-12 Enrollment for MN Economic Regions 1, 2 and 5 (combined)

Grade	2007-08	2008-09	2009-10	2010-11
1	3,838	3,783	3,927	4,009
2	3,794	3,779	3,797	3,925
3	3,764	3,704	3,841	3,814
4	3,783	3,731	3,767	3,846
5	3,785	3,759	3,792	3,796
6	3,950	3,813	3,835	3,834
7	4,012	4,020	3,961	3,934
8	4,140	3,981	4,043	3,978
9	4,438	4,255	4,156	4,141
10	4,567	4,372	4,280	4,174
11	4,717	4,475	4,316	4,235
12	4,899	4,677	4,523	4,410

Source: Minnesota Department of Education

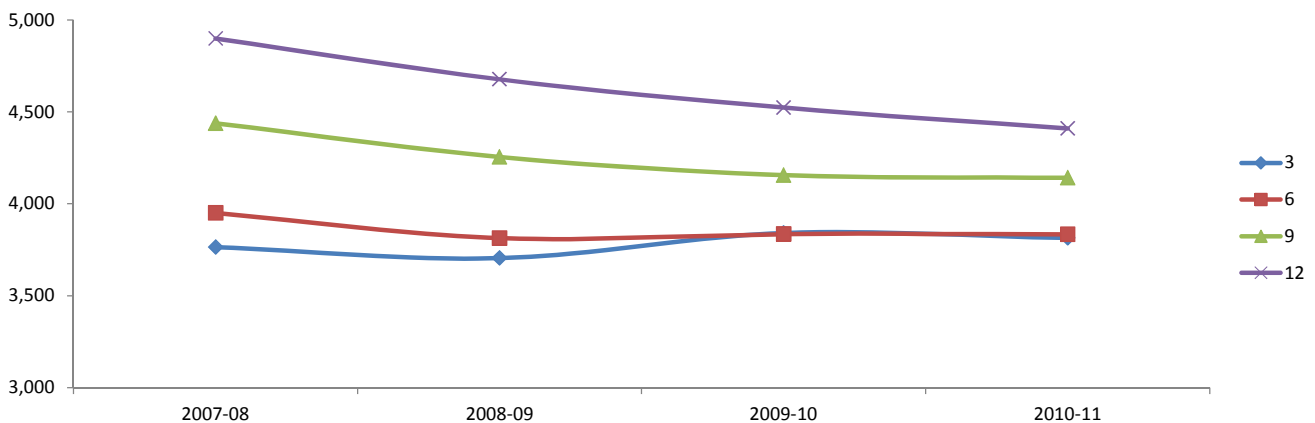


Figure 11. K-12 Enrollment for MN Economic Regions 1, 2 and 5 (combined)

Table 47. Beltrami County Average Unemployment Rate

	2001	2002	2003	2004	2005	2006	2007	2008	2009	2010
Beltrami County	4.7%	4.9%	5.4%	5.7%	5.4%	5.3%	6.1%	6.9%	8.9%	8.2%
RGN 2: Headwaters	5.4%	5.6%	6.1%	6.2%	5.9%	5.8%	6.6%	7.6%	9.8%	9.0%
Minnesota	3.8%	4.5%	4.9%	4.6%	4.2%	4.1%	4.6%	5.4%	8.1%	7.3%
National	4.7%	5.8%	6.0%	5.5%	5.1%	4.6%	4.6%	5.8%	9.3%	9.6%

Source: MN Department of Employment and Economic Development and U.S. Bureau of Labor Statistics

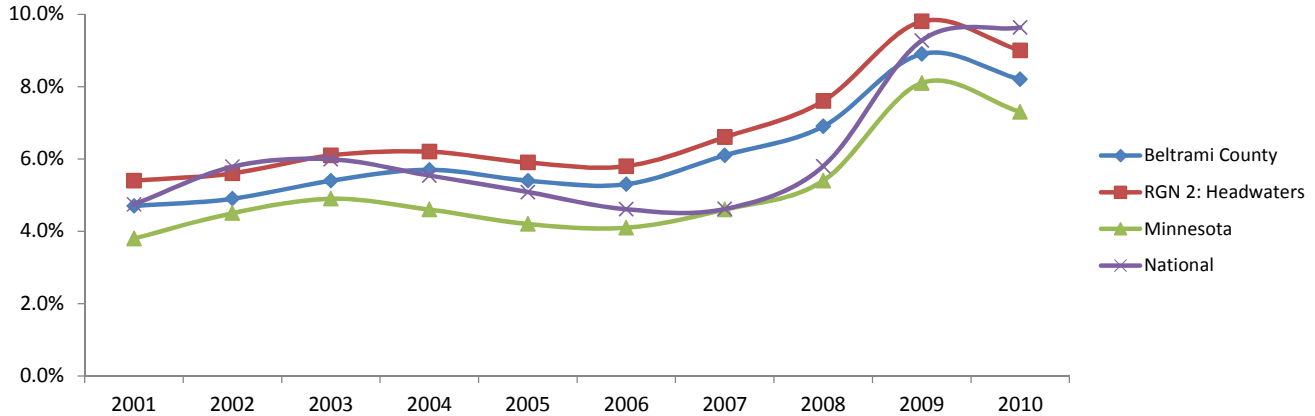


Figure 12. Beltrami County Average Unemployment Rate

Table 48. Minnesota Economic Development Regions

Region	County
Region 1: Northwest	Kittson County
	Marshall County
	Norman County
	Pennington County
	Polk County
	Red Lake County
	Roseau County
Region 2: Headwaters	Beltrami County
	Clearwater County
	Hubbard County
	Lake of the Woods County
	Mahnomen County
Region 3: Arrowhead	Aitkin County
	Carlton County
	Cook County
	Itasca County
	Koochiching County
	Lake County
	St. Louis County
Region 4: West Central	Becker County
	Clay County
	Douglas County
	Grant County
	Otter Tail County
	Pope County
	Stevens County
	Traverse County
	Wilkin County

(Table 48. contd.)

Region 5: North Central	Cass County Crow Wing County Morrison County Todd County Wadena County
Region 6E: Southwest Central	Kandiyohi County McLeod County Meeker County Renville County
Region 6W: Upper Minnesota Valley	Big Stone County Chippewa County Lac qui Parle County Swift County Yellow Medicine County
Region 7E: East Central	Chisago County Isanti County Kanabec County Mille Lacs County Pine County
Region 7W: Central	Benton County Sherburne County Stearns County Wright County
Region 8: Southwest	Cottonwood County Jackson County Lincoln County Lyon County Murray County Nobles County Pipestone County Redwood County Rock County
Region 9: South Central	Blue Earth County Brown County Faribault County Le Sueur County Martin County Nicollet County Sibley County Waseca County Watonwan County
Region 10: Southeast	Dodge County Fillmore County Freeborn County Goodhue County Houston County Mower County Olmsted County Rice County Steele County Wabasha County Winona County
Region 11: 7 County Twin Cities	Anoka County Carver County Dakota County Hennepin County Ramsey County Scott County Washington County

Source: Department of Employment and Economic Development